

ergotron®



Since our founding more than three decades ago, we've used movement to remove constraints from how people create, collaborate and work with technology. We rely on ergonomic principles, user-centered designs and more than 200 patents to build kinetic work environments that help people thrive.

Monitor Mounts

Well-being is within an arm's reach

An active sit-stand workstyle represents just one aspect of a workday that moves. With Ergotron's monitor arms, you can harness even more productivity, collaboration and comfort.

Monitor arms help keep your monitor at the right height whether sitting or standing for an ergonomic fit. Using a monitor arm on its own or with a standing desk supports overall wellness while offering flexible, personalized screen views. By freely moving one, two or three monitors, you can work smarter and free up valuable workspace.




Constant Force™



Sit-Stand Workstations

The broadest portfolio for the perfect fit

Our products foster a workplace culture of movement, encouraging active workstyles that benefit employers and employees with improved comfort, flexibility and collaboration.

Every body and every workspace is different. With the widest selection of styles, sizes and attachments, Ergotron's WorkFit® sit-stand solutions help employees find their best fit. With the ability to easily go from sitting to standing and back again, they can choose how they work in an environment that inspires creativity and long-term results.

<i>MONITOR ARMS</i>	NX Arm	5
	LX Single Arm	6
	LX Dual Direct Arm	7
	LX Dual Stacking Arm	8
	LX Dual Side-by-Side Arm	9
	MXV Arm	10
	HX Arm	11
	TRACE Mount	12
<i>WORKFIT</i>	WorkFit-TX	14
	WorkFit Corner	15
	WorkFit-Z Mini	16
	WorkFit-TL	17
	WorkFit-S	18
	WorkFit Elevate	19
<i>CHARGING SYSTEMS</i>	Zip12 Wall Cabinet	20
<i>MOBILE WORKING</i>	Mobile Sit-Stand Desk	21



Whether at home or in the office, everyone deserves a workspace that looks great and makes them feel their best. Create a neat, productive workspace with the **NX Monitor Arm**, an affordable monitor arm that's easy to set up and backed by Ergotron's trusted reputation for quality. Available in white or matte black.



Notebook Tray

ACCESSORIES





The **LX Single Arm** provides a comfortable fit with full monitor movement and improved ergonomics for screens weighing up to 11.3 kg. This luxury arm easily adjusts monitors up to 34" in size and saves space as you place the screen in the best view to tackle each to-do. The streamlined look enhances your work area, plus

it's built to last. Available in aluminum, white or matte black. The Tall Pole option provides more height, available in aluminum, white or matte black. The wall arm allows for space-saving convenience, available in aluminum, white or matte black.

Find your best view, save desk space and discover your most productive self, thanks to the **LX Desk Dual Direct Arm**. The low-profile monitor cross-bar uses a compact range of motion to keep your space, your space. With an individual per monitor weight range of 1–5 kg and

a total weight range of 1.8–9.9 kg, LX Dual Direct supports a wide variety of monitors. Move two screens even easier with the Dual Direct Handle Kit accessory. Available in aluminum, white or matte black.



ACCESSORIES



Extension



Dual Direct Handle Kit

ACCESSORIES





The **LX Dual Stacking Arm** lets you find your best view, save desk space and discover your most productive self, just like the LX Dual Side-by-Side Arm. This dual monitor mount lets you position each screen separately or stack them

with 33 cm of height adjustment. The LX Dual Stacking Arm, Tall Pole works with the Extension & Collar Kit to create a stable multi-monitor solution for up to four screens. Available in aluminum, white or matte black.

The **LX Dual Side-by-Side Arm** was designed for side-by-side or low angle screen views. Easily position your dual monitors for the best views, while freeing up your desktop for office essentials. The dual arm extends LCDs

or laptops up to 64 cm with an extension range of 46 cm. Project wrapped up? Reclaim a space full of opportunities by folding the arms and pushing them aside. Available in aluminum, white or matte black.

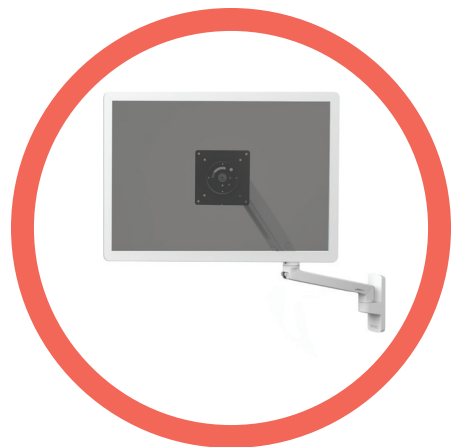


ACCESSORIES



Extension & Collar Kit





The sleek and lightweight **MXV Desk Monitor Arm** incorporates a modern V-shaped design to create a stable yet flexible platform for screens up to 9.1 kg. With a slim profile, MXV offers 33 cm of height adjustment, up to 49 cm monitor

extension, integrated tilt and more—all on a convenient swivel base. Available as single and dual desk mount, and single wall mount in aluminum, white or matte black.

HX Desk and Wall Arms use an innovative post design to free up space with display positioning that supports greater productivity and collaboration. Sleek and streamlined, HX Arms fit large screens weighing up to 19 kg. Available in aluminum or white for one, two or three monitors. Single and dual desk arms are also available in matte black.

The **HX Desk Monitor Arm with HD Pivot** includes a heavy-duty tilt pivot for an immersive viewing experience on ultra-wide, curved displays 15.2–30.4 cm deep and weighing 12.7–19.1 kg. Available in white or matte black.



Heavy-Duty Tilt Pivot



Triple Bow Kit

ACCESSORIES





Shape individual work experiences with the innovative **TRACE™** Monitor Mount. It adapts to the ergonomic needs of each employee to create agile workspaces at home or in the office that effortlessly shift between users and tasks

to encourage movement, productivity and a collaborative spirit. TRACE easily transitions between individual and collaborative work using patented Constant Force™ Technology for smooth adjustment.

It always returns to the natural home position to keep screen placement intact and to maintain a uniform look. The integrated cable management and compact base promote an open and

organized workspace with a flexible design that accommodates changing technology and user preferences. Available in single or dual configurations, white or matte black.



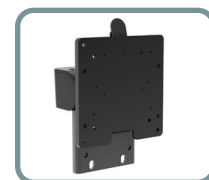
ACCESSORIES



Slim Profile Clamp Kit



Grommet Kit



Single Conversion Kit



Dual Conversion Kit

ACCESSORIES





Designed to offer advanced ergonomics out-of-the box, the **WorkFit-TX** Standing Desk Converter serves up a full 50.8 cm range of sit-stand motion. The X-shaped lift folds down within inches of your desk for a sleek resting profile that's three inches below our competitors. It fits more users with an

extremely low profile that keeps the right monitor-to-keyboard height ratio. With a height-adjustable, back-tilt keyboard that sits below the worksurface, this ultra-low desk converter offers the best of both worlds—leading ergonomics sitting and standing. Available in black.



ACCESSORIES



Single Monitor Kit



Dual Monitor Kit



LCD & Laptop Kit



Designed with the corner in mind, the **WorkFit Corner** Standing Desk Converter offers 38 cm of easy vertical adjustment so you can work sitting or standing without bumping into cube or office walls. The WorkFit Corner sits flush to any cube or office corner thanks to a large

notched worksurface that fits single and dual monitors. Get more from your corner configuration by using up dusty corner space and taking advantage of more worksurface on both sides of your sit-stand workstation. Available in black.



Single Monitor Kit



Dual Monitor Kit



LCD & Laptop Kit

ACCESSORIES





WorkFit-Z Mini is equipped with the features you need most—easy adjustment between sitting and standing, space for your smart devices and a smooth, grey woodgrain finish that complements your office décor. Ideal for single monitors or notebooks, this compact standing desk converter turns your work surface into a height-adjustable standing desk with one

simple movement. Offering infinite, click-free vertical lift adjustments up to 32 cm and a space-saving design, WorkFit-Z Mini also features a cable-free work surface and comfortable keyboard tray. It arrives completely assembled for an out-of-the box, no-fuss solution that gets you standing sooner. Available in dove grey.

Looking for more? The **WorkFit-TL** is based on our well-loved WorkFit-T blueprint and features a wider keyboard tray, larger worksurface and supports a weight capacity of up to 18.1 kg. It offers 38 cm of easy, crank-free adjustment to keep your space, your space.

The WorkFit-TL also arrives fully assembled, so you can quickly convert any tabletop to a standing desk. Just set it on top of your current desktop, and you're ready to WorkFit. Available in black (and in white ANZ only).



Single Monitor Kit



Dual Monitor Kit



LCD & Laptop Kit



Monitor Arm

ACCESSORIES





Advanced ergonomics? You got it. The **WorkFit-S Single** is one of our best solutions for flexible and comfortable working. This height-adjustable standing desk easily attaches to your desktop—just lift or lower the WorkFit-S and tweak the optional weight settings for no-sweat adjustment. Then individually fine-tune your single monitor mount and keyboard tray for how you work

best. The keyboard tray sits below the worksurface to keep your arms at an ergonomic 90-degree angle. The **WorkFit-S Dual** supports two monitors to up your productivity with the same ergonomic benefits. Additional options include an integrated worksurface and heavy duty construction. Single available in black, dual available in black or white.

ACCESSORIES



Dual Tall User Kit



Hinged Bow



Grommet base



Raise the bar on wellness, productivity and collaboration with the **WorkFit Elevate Wall Desk**. This modern wall mount reimagines underused spaces as a flexible workstation for individual work or collaboration in healthcare clinic spaces, office common areas, and more.

The height-adjustable surface easily adjusts from sit to stand, providing the full BIFMA height range of 26" (66 cm) for comfortable working. Available in white with choice of two woodgrain laminate options (Walnut Hills and Mendota Maple).

ACCESSORIES



Single Monitor Riser Kit





The **Zip12 Charging Wall Cabinet** lets you power up devices in a slim, space-saving enclosure. Charge and secure up to 12 tablets and Chromebooks from a wide variety of manufacturers like

Microsoft, Samsung, Apple and more. A sliding door provides easy access to devices, and Show & Stow™ technology tilting tablet trays make loading and unloading devices simple.



From offices to conference rooms to impromptu meetings in the break room, work doesn't only happen at your assigned workstation. **Mobile Sit-Stand Desks** allow employees to work individually or collectively around the office, with the same health and

productivity benefits as height-adjustable standing workstations. The easy-to-find hand lever lets employees adjust the desk height 40.6 cm for their most comfortable level. And the simple, lightweight design makes the desks easy to assemble, move and store.





MOVING YOU FORWARD



@Ergotron



@ErgotronInc



@Ergotron



@ErgotronGuy



@Ergotron

Download additional resources at ergotron.com and ergotron.com/commercial

APAC Customer Care:

apaccustomerservice@ergotron.com

© Ergotron, Inc. revision 2024.03.18

Literature designed in the U.S.A. and printed in China. Content subject to change.

Ergotron devices are not intended to cure, treat, mitigate or prevent any disease.

Patent information available at www.ergotron.com/patents

870-01-068-EO

