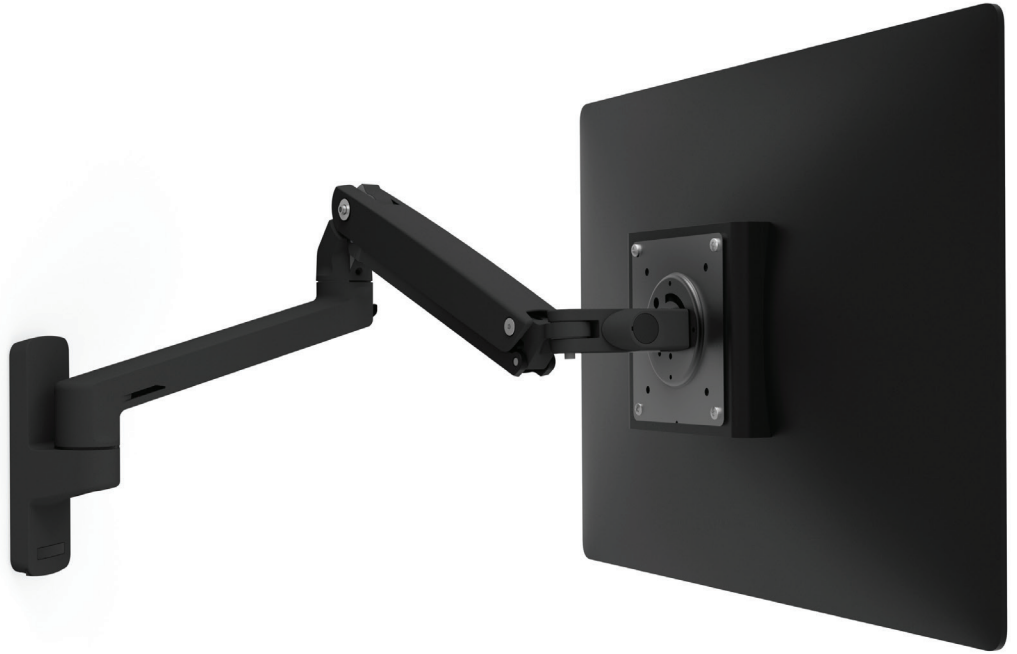


# ergotron®

*moving you forward*

## **MXV** **Wall Monitor Arm**

- Supports monitors weighing 7–20 lbs (3,2–9,1 kg)
- Offers a narrow profile — 25% slimmer than the LX monitor arm
- Provides 13" (33 cm) height adjustment
- Allows you to easily position displays with patented Constant Force™ technology
- Extends monitor(s) up to 24.6" (63 cm)
- Prevents the arm from making contact with the wall thanks to a removable base rotation stop that limits the range to 180°
- Creates additional flexibility with a friction pivot that offers a 180° tilt
- Arrives fully assembled for easy install
- Includes a 10-year warranty

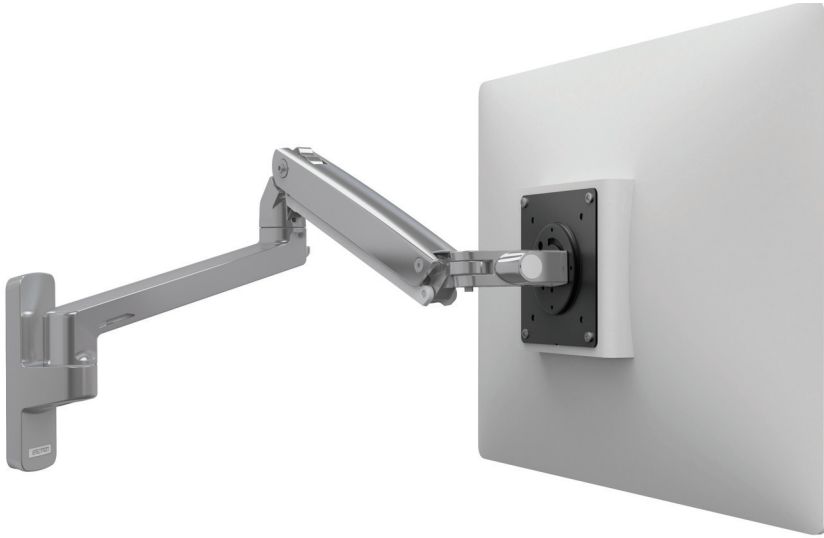


SLEEK PROFILE AND MODERN DESIGN: LIGHTWEIGHT ARM ELEVATES YOUR SPACE WITH FUNCTIONALITY AND STYLE

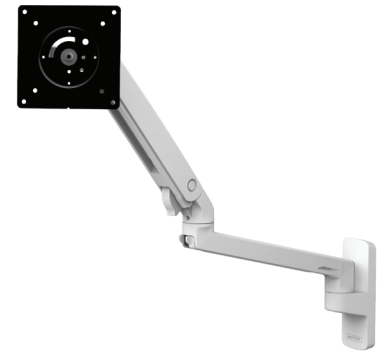
  
Constant Force™

The sleek and lightweight MXV Wall Monitor Arm incorporates a modern design with proven engineering to create a stable yet flexible platform for your screen. With a slim profile, MXV offers 13" (33 cm) of height adjustment, a minimum of 22.2" (56 cm) of extension, integrated tilt and more — all on a convenient swivel base. The arm's adjustability helps increase viewing comfort, while its upscale finish leaves a stylish impression.

# MXV Wall Monitor Arm



POLISHED ALUMINUM



WHITE

## MXV Wall Monitor Arm

Part # (color)	North America/APAC: 45-505-026 (polished aluminum) Worldwide: 45-505-216 (white) Worldwide: 45-505-224 (matte black)
Includes	Fully assembled arm with wall mounting bracket and monitor mounting hardware
Typical LCD Size	≤ 34"

LCD SIZE IS APPROXIMATION. DIMENSION IS DIAGONAL MEASUREMENT OF SCREEN. LCD SIZE MAY BE EXCEEDED AS LONG AS SCREEN WEIGHT DOES NOT EXCEED MAXIMUM WEIGHT CAPACITY OF THE MOUNT.

Weight Capacity	7–20 lbs (3,2–9,1 kg)
Lift	13" (33 cm)
Tilt	180° ↑ 90° / ↓ 90°
Pan	180° / 360°
Rotation	360°
VESA	MIS-D
Extension	≤ 24.6" (63 cm)
Product Weight	6.4 lbs (2,9 kg)
Shipping Weight	7.3 lbs (3,3 kg)
Shipping Dimensions	34.4" x 9.4" x 6.3" (87,5 x 23,8 x 16 cm)
Warranty	10 years



MATTE BLACK

Download additional resources at [ergotron.com](http://ergotron.com).

For more information:

Americas: 800.888.8458 / +1.651.681.7600 / [insidesales@ergotron.com](mailto:insidesales@ergotron.com)

EMEA: +31.33.45.45.600 / [info.eu@ergotron.com](mailto:info.eu@ergotron.com)

APAC: [apaccustomerservice@ergotron.com](mailto:apaccustomerservice@ergotron.com)

Custom: [custom@ergotron.com](mailto:custom@ergotron.com)

© Ergotron, Inc. 03.31.2023

Literature made in the U.S.A. Content subject to change.

Ergotron devices are not intended to cure, treat, mitigate or prevent any disease.

Patent information available at [www.ergotron.com/patents](http://www.ergotron.com/patents).

WorkFit, StyleView, LearnFit, Neo-Flex, PowerShuttle, LiFeKinnex, CareFit and eKinnex are trademarks of Ergotron.

