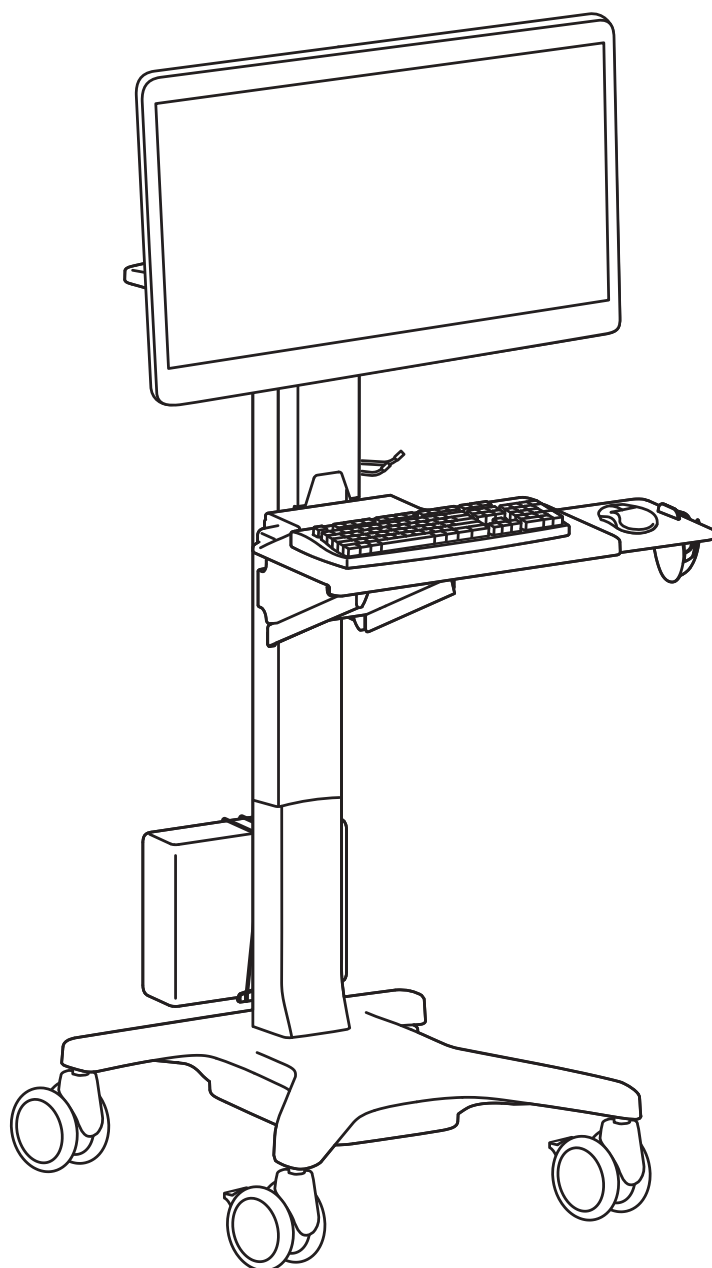


ergotron®

Neo-Flex™ WideView Workspace



汉语



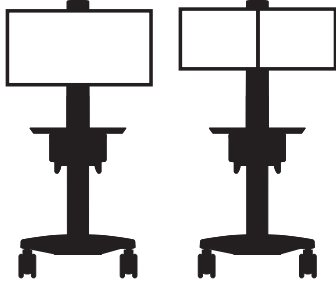
若需最新的用户安装指南，请访问：www.ergotron.com

English, Español, Français, Deutsch, Nederlands, Italiano, Svenska, 日本語, 汉语

www.ergotron.com | USA: 1-800-888-8458 | Europe: +31 (0)33-45 45 600 | China: 400-120-3051 | Japan: japansupport@ergotron.com

⚠️ WARNING

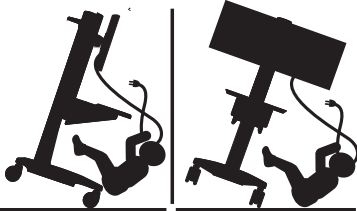
DO NOT load Cart below minimum or above maximum weight capacities. DO NOT mount a display larger than the recommended size. Failure to comply with warning may result in Cart instability leading to equipment damage or personal injury.



Min. 14 lbs (6.35 kg) Min. 11 lbs (5 kg)
Max. 49 lbs (22.2 kg) Max. 46 lbs (20.9 kg)

警告：手推车装载量不可低于其最小可承重量，也不可高于其最大可承重量。不要安装大于推荐尺寸的显示器。不遵守警告指示可能会使手推车不稳，而导致设备损坏或人身伤害。

⚠️ WARNING



TIPPING HAZARD!

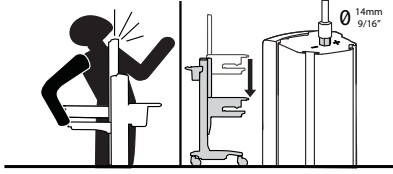
DO NOT allow children to climb on Cart.
DO NOT route electric cords or equipment cables within reach of children.
LOCK CASTERS when Cart is stationary.
DO NOT move Cart with Display in highest position.
DO NOT move Cart over cords or uneven, dirty, soft or sloping surfaces.
DO NOT move Cart by pushing on Display.
Failure to comply with this warning may result in Cart instability leading to equipment damage or personal injury.



TO MOVE CART

1. Push Display down to lowest position.
2. Disconnect power cord and secure to Cart.
3. Unlock casters; point casters in direction of travel.
4. Use rear handle to push Cart.

⚠️ WARNING



Impact Hazard! Moving Parts can Crush and Cut.

Minimize Lift Tension BEFORE Removing Mounted Equipment.

To Minimize Lift Tension

1. Lower worksurface to lowest position.
2. Turn adjustment nut at top of riser counterclockwise until it stops (may require 40-60 turns to minimize lift tension).
3. After removing or adding equipment adjust lift tension to compensate for weight of new load.

Failure to heed this warning may result in serious personal injury or property damage!

撞击危险！部件移动会导致挤压和割伤。在拆除所安装的设备之前先将升降张力调节至最小。

要将升降张力调节至最小：

1. 将工作台面降至最低位置。
2. 逆时针旋转升降杆顶部的调节螺母，直到转动为止（可能需要旋转 40-60 圈才能使升降张力最小）。
3. 在拆除或添加设备后，调节升降张力来补偿新负荷的重量。不留心此警告可能会导致严重的人身伤害或财产损失！

⚠️ WARNING

**STORED ENERGY HAZARD!
DO NOT OPEN TOWER OR BASE.
DO NOT REMOVE SAFETY GUARD.**

A primary mechanism within the Cart is under tension and can be hazardous to people exposed to it under certain conditions. DO NOT open the Cart tower or base. DO NOT attempt to service the Cart. DO NOT remove safety guards or labels designed to protect or inform of possible hazards. Only Ergotron-approved installers may service or otherwise modify Cart. Failure to heed this Warning may result in serious Personal Injury and Damage both to the cart and equipment.



240-027-00

警告：

储能危险！

不要打开支架或底座。

不要拆除安全板。

手推车内的主要机构处于张力下，在某些情况下可能会对旁边的人构成危险。

不要打开手推车支架或底座。

不要尝试维修手推车。不要拆下用于保护或告知可能存在的危险的安全板或标签。

只有 Ergotron 批准的安装人员才可以维修或修改手推车。不留心此警告可能会造成严重的人身伤害并损坏手推车和设备。

警告：倾覆危险！

不可让儿童攀爬手推车。

电线或设备连接线不可绕经儿童可触及的位置。

将手推车固定停放时，应锁定万向轮。

在显示器处于最高位置时，不要移动手推车。

不要将手推车移经电线或不平整、肮脏、柔软或倾斜的表面。

移动手推车时，手不要按在显示器上。

不遵守此警告可能会使手推车不稳，而导致设备损坏或人身伤害。

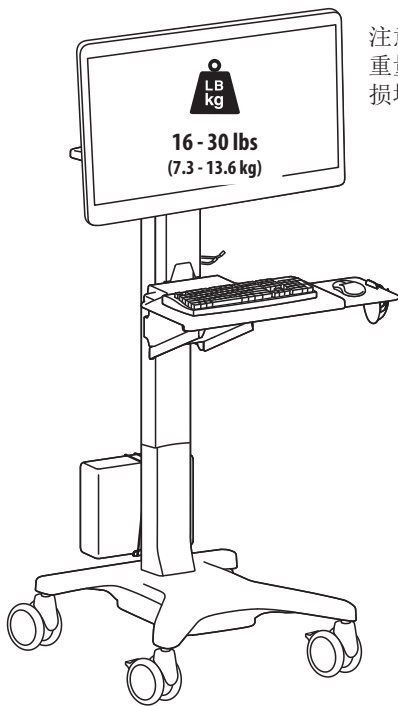
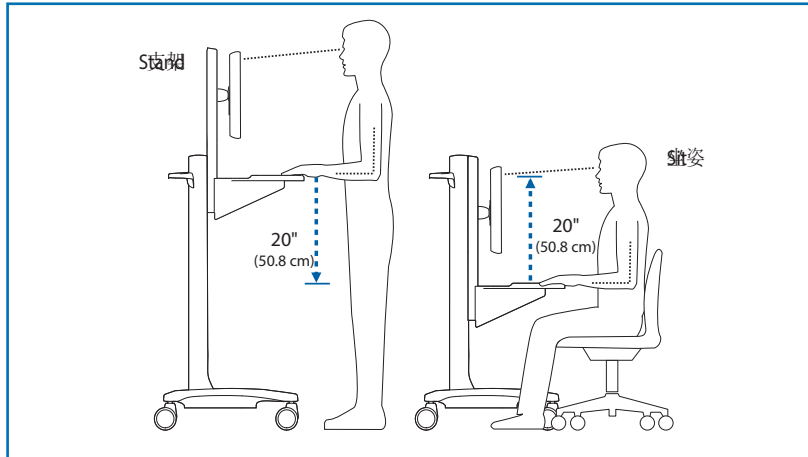
要移动手推车

1. 将显示器压至最低位置。
2. 断开电源线并妥善放置于手推车上。
3. 解除万向轮锁定；将万向轮指向目标移动方向。
4. 使用后把手推动手推车。

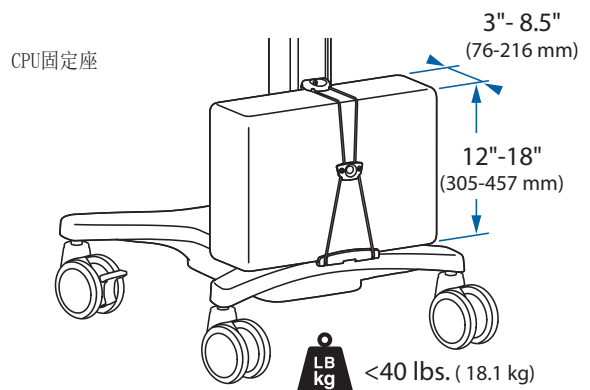
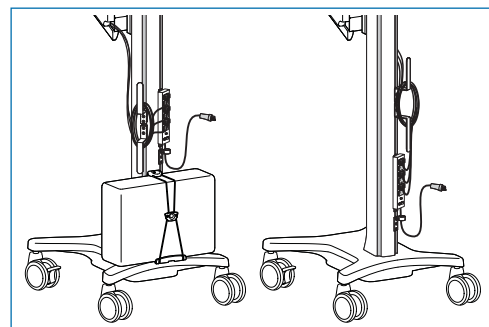
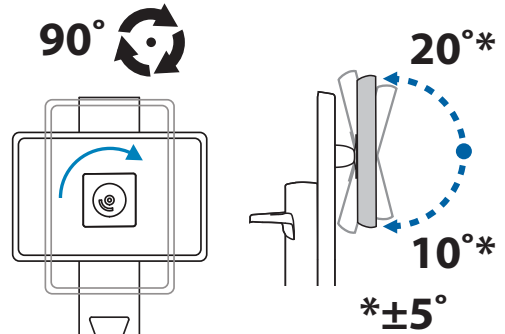


重要说明！本产品安装完成后需要调节。在尝试进行调节之前，确保所有设备都正确安装在产品上。本产品应能在整个动作范围内灵活自如地移动，并能固定在所设定的位置。如果移动过于容易或过于困难，或者产品不能固定在想要的位置上，请按照调节说明操作，使动作灵活自如。根据您所用产品及调节方式，可能需要旋转几圈后才能注意到差别。每次添加或者从本产品上拆除设备时，都会使安装负荷重量发生变化，您应该重复调节步骤，确保运行状态安全、最佳。

特点和规格



注意：请勿超过所列的最大可承重量。否则可能导致重伤或设备损坏！

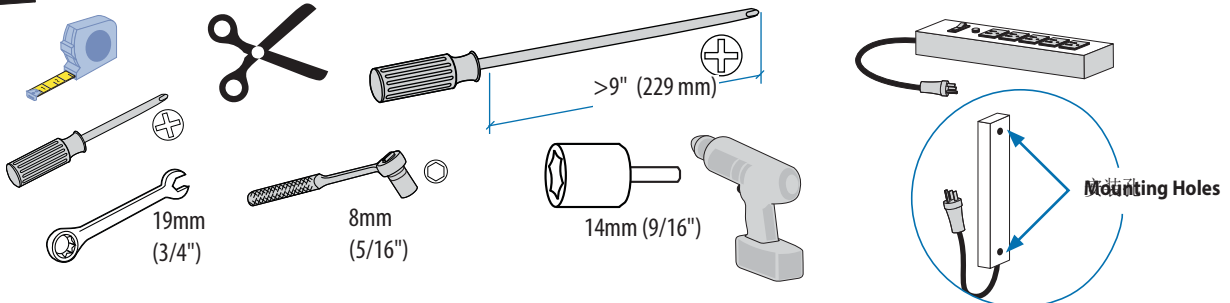


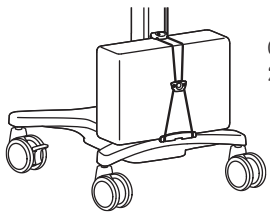
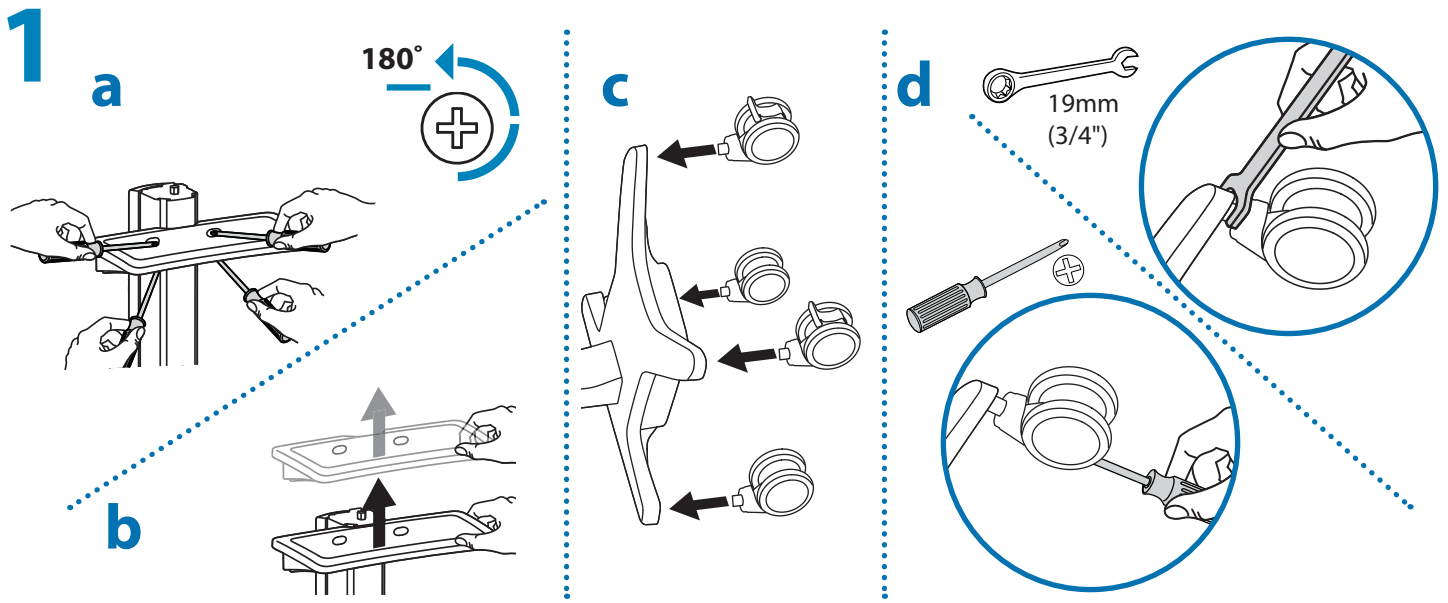
部件



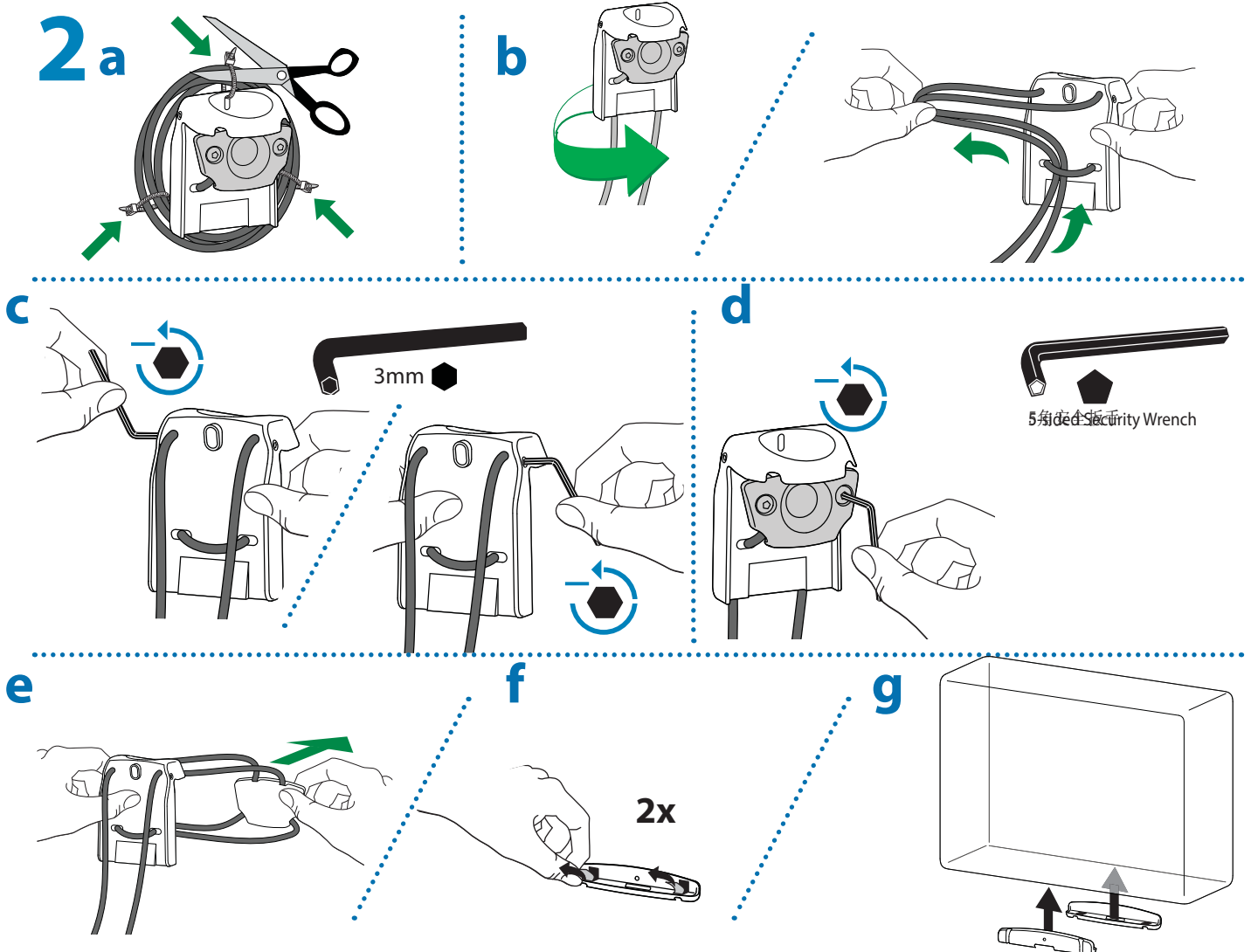
	A	B	C	D	E	F
1	1x 		CPU Holder 1x 		1x M5 x 18mm Security Screw	1x 3mm
2				1x 		
3				1x 	1x 	1x 5-sided Security Wrench
4				2x 		4x
5	2x 	2x 	1x 	2x 2x M5 x 10mm	1x 	4x M6x33mm
6	1x 	1x 			2x 	1x
7	1x 1x 	4x M6 x 14mm	4x M4 x 12mm		1x M5 x 8mm	4x
		1x M3 x 6mm				2x
8	4x M5 x 7mm	4x M5 x 12mm	4x M6 x 12mm	4x M5 x 20mm		4x M8M5 Converter
	1x 	2x 		1x 	4x 	
9	1x 		2x 	1x 		4x

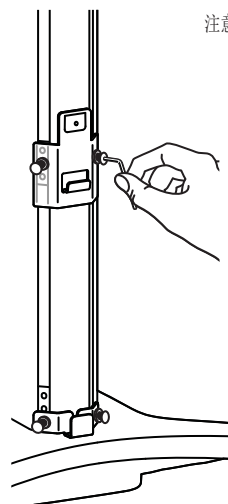
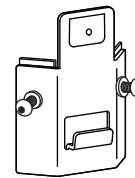
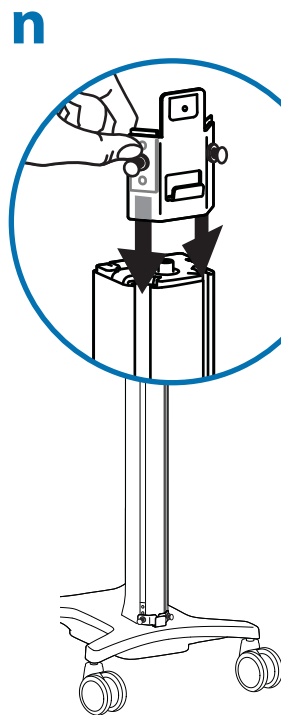
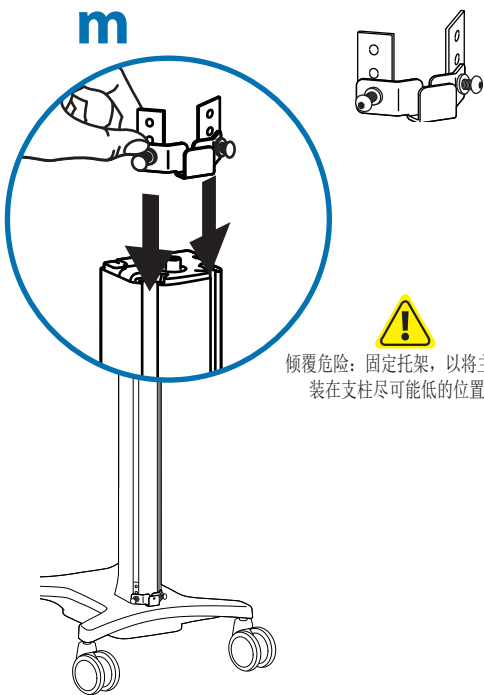
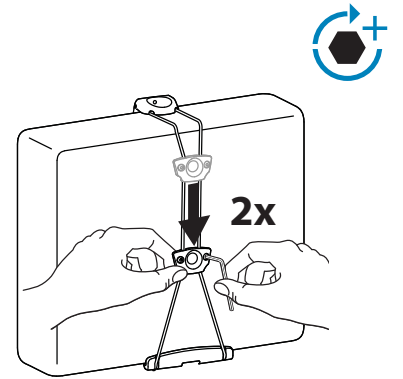
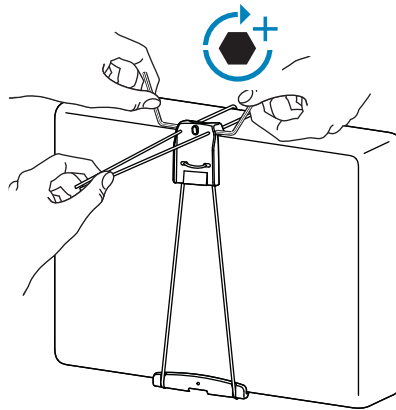
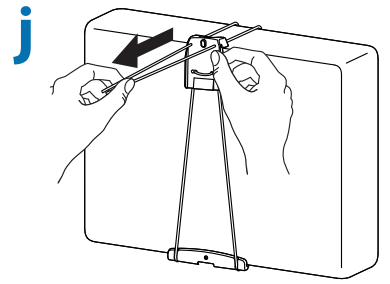
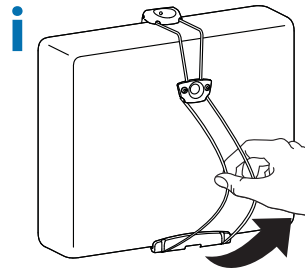
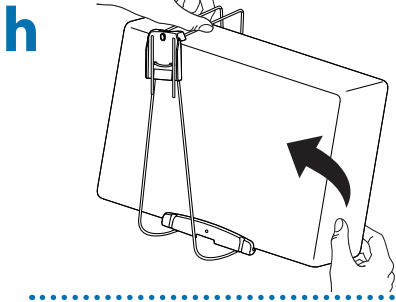
需要的工具



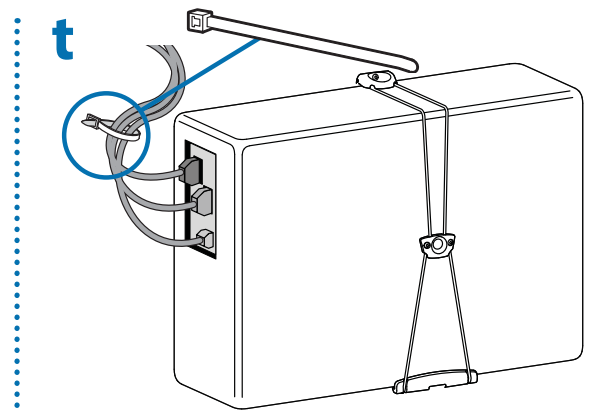
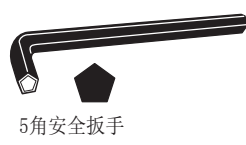
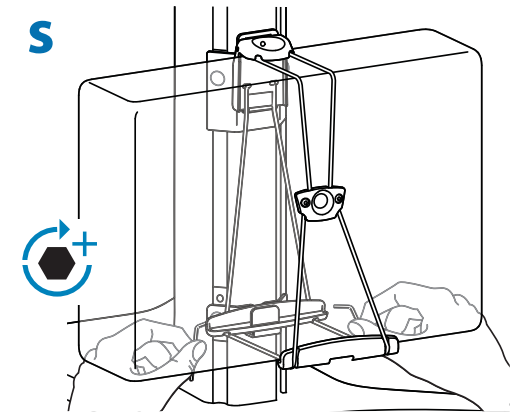
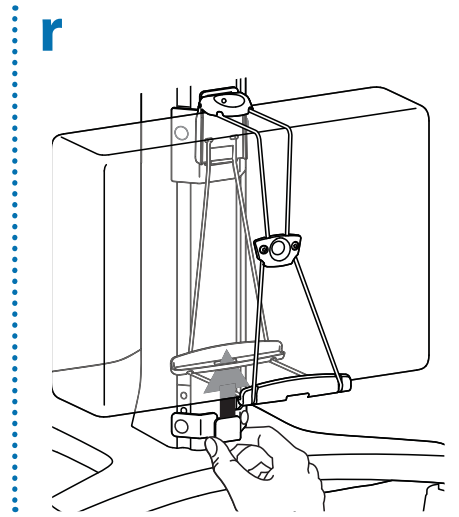
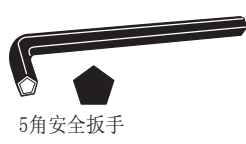
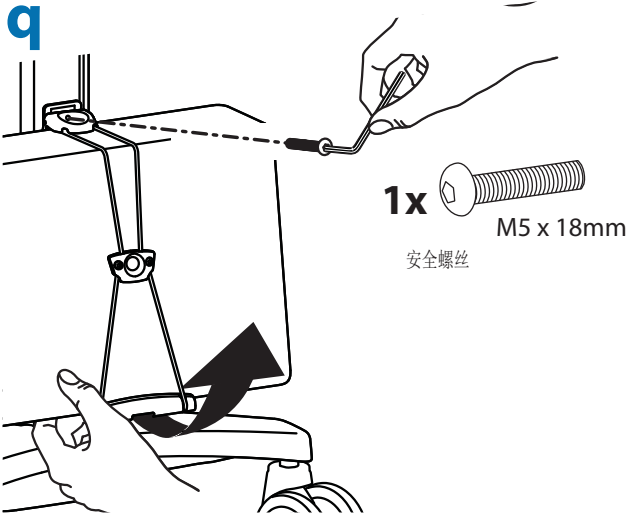
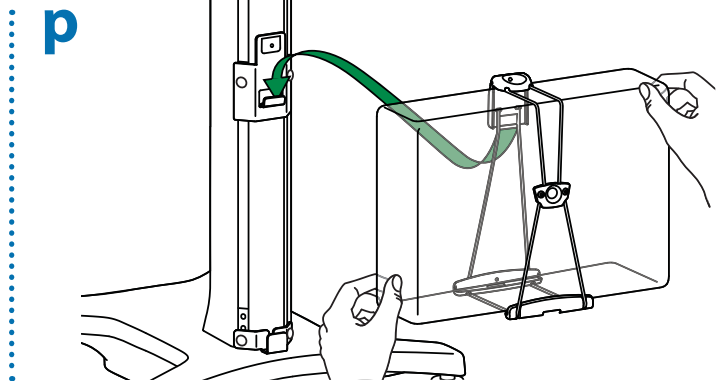
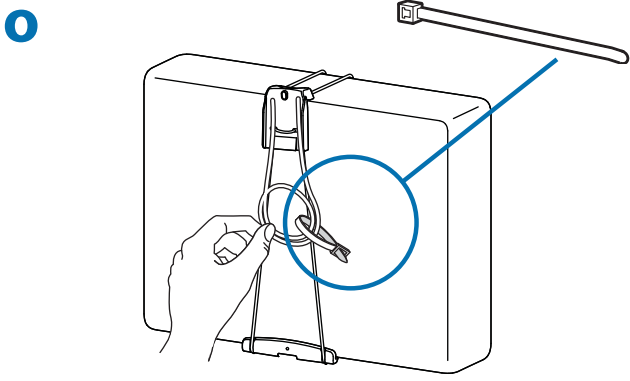


CPU固定座 注意：如果你不在推车上安装主机，则跳过第2步，进入第3步。

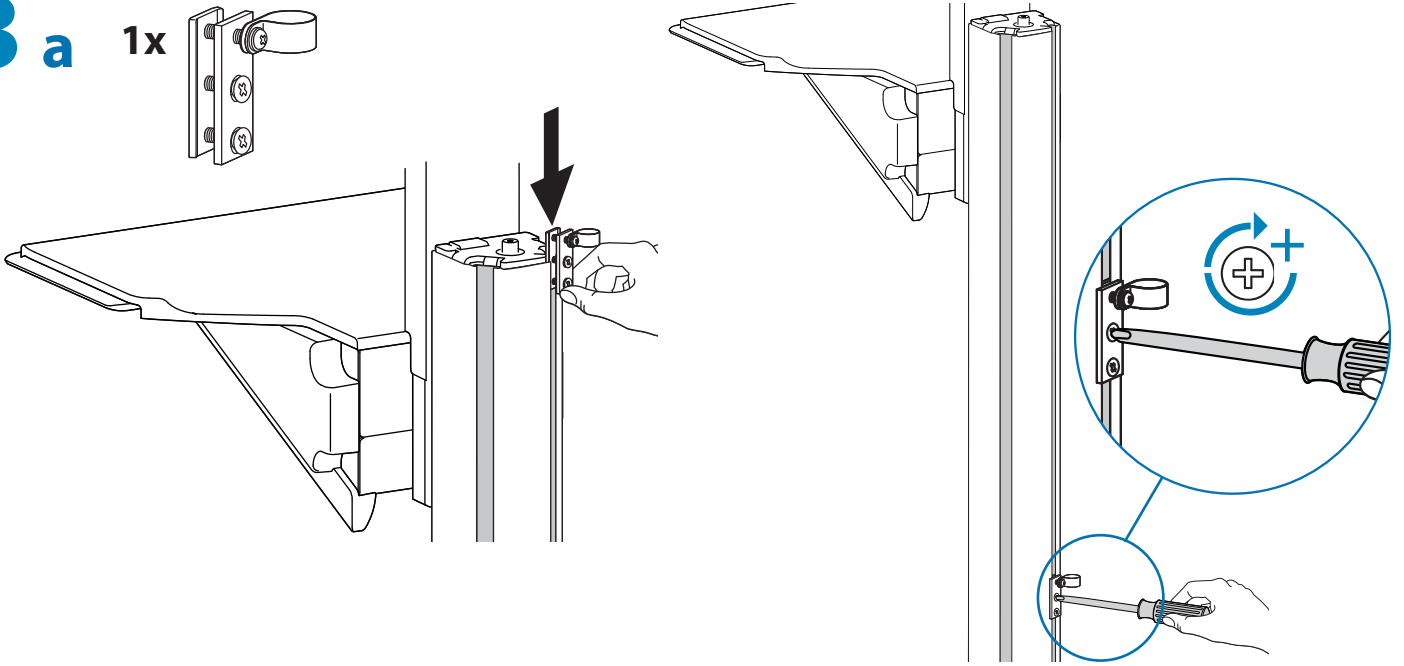




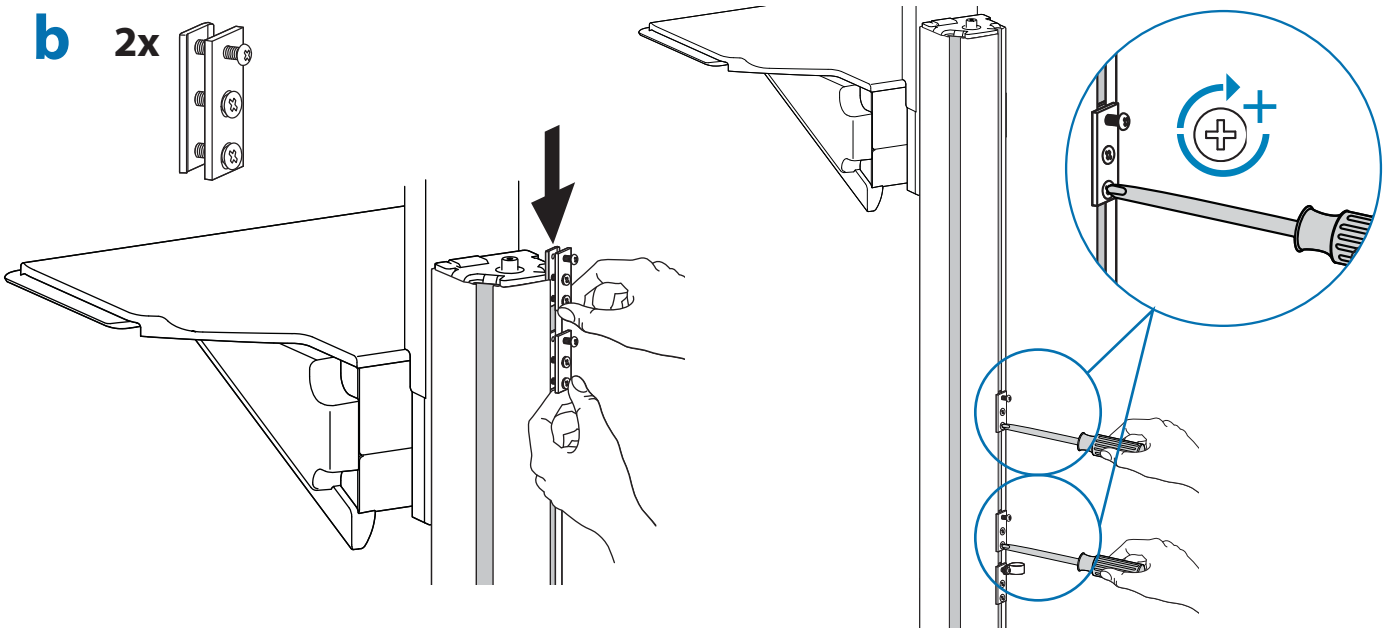
注意：位于支柱的底部。这时候不要拧紧。



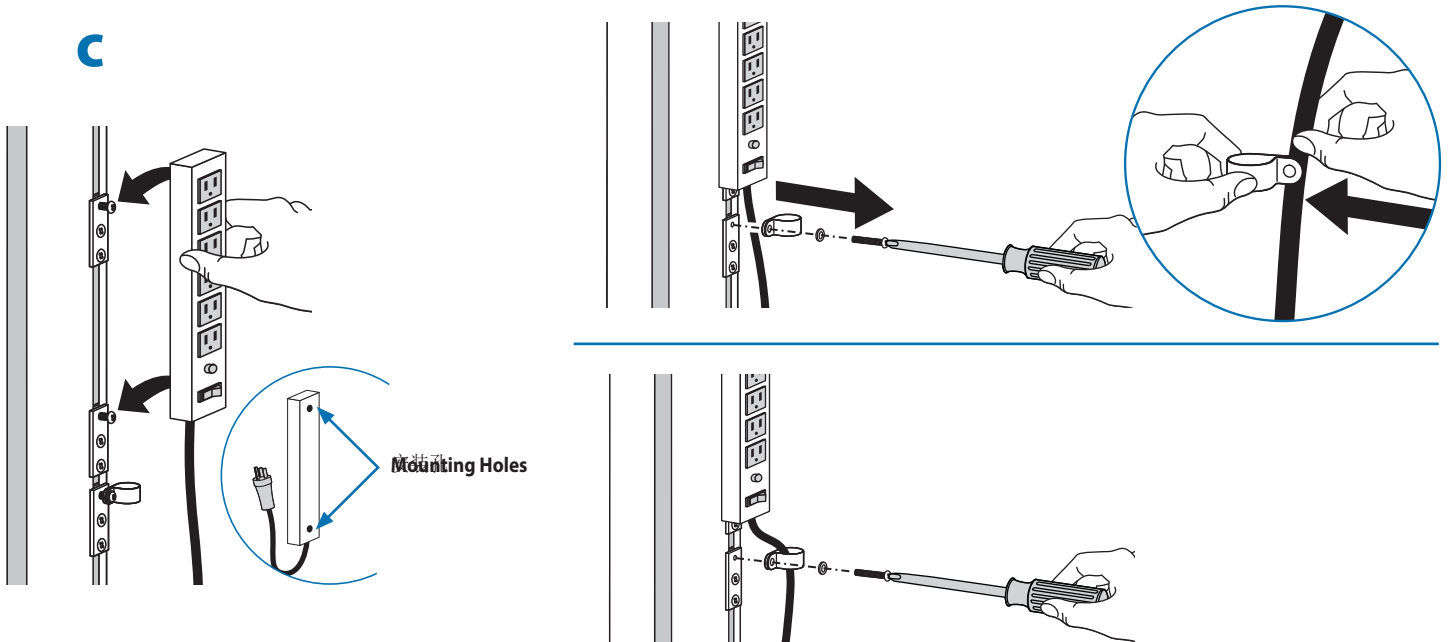
3 a 1x

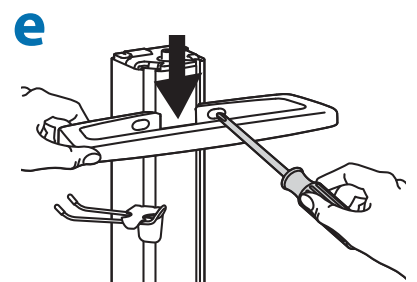
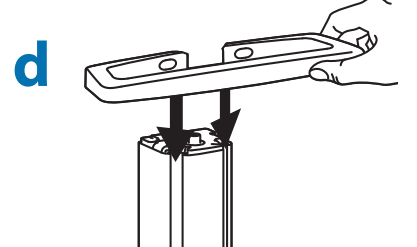
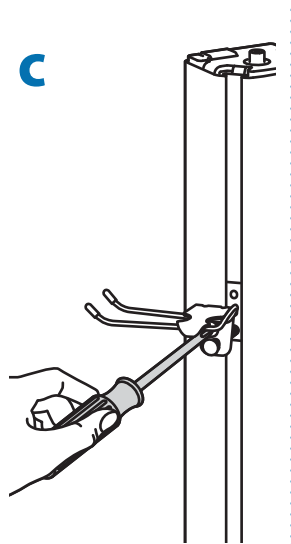
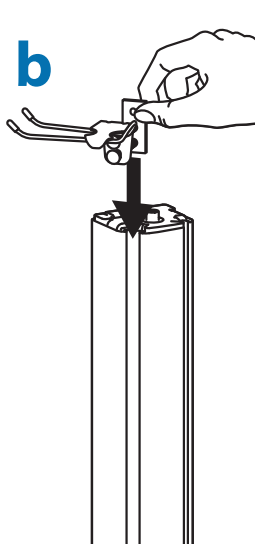
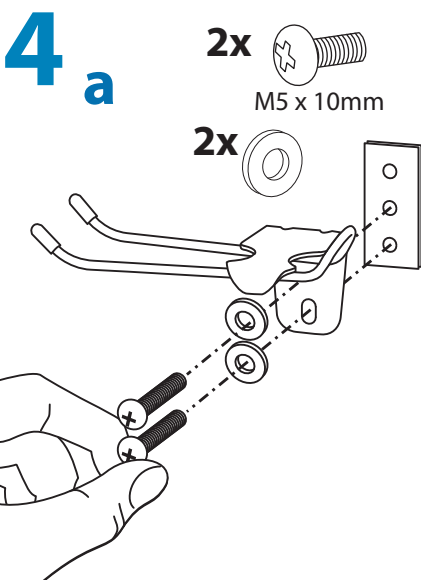
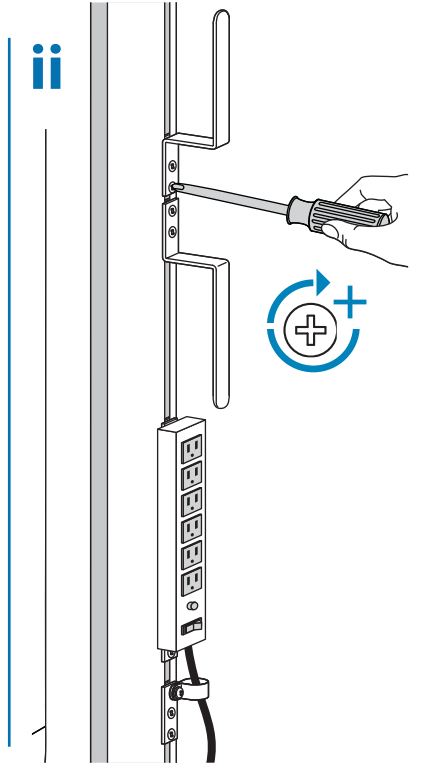
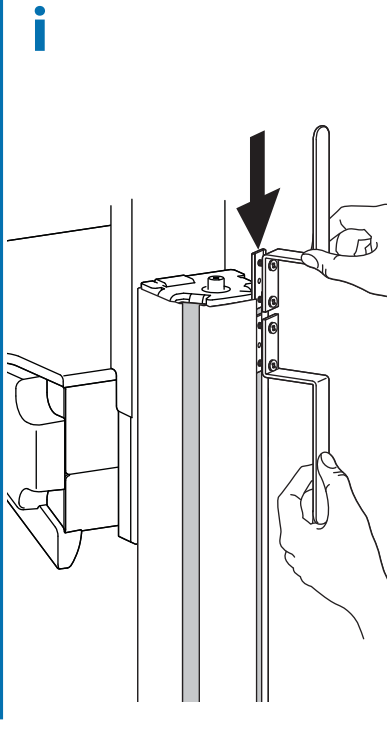
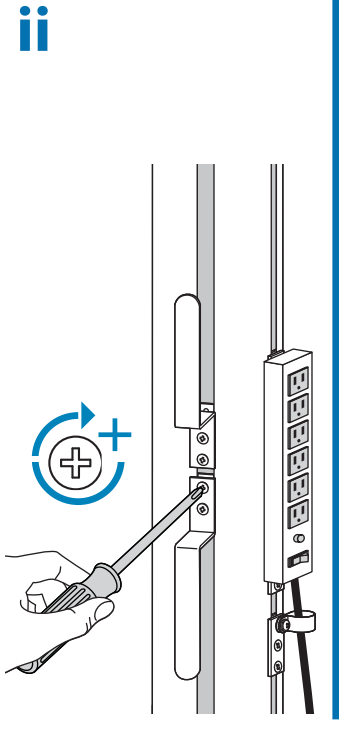
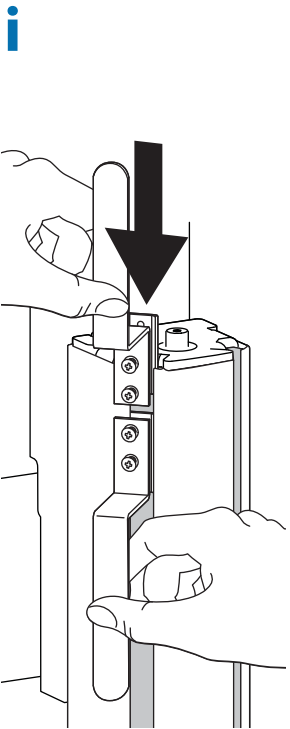
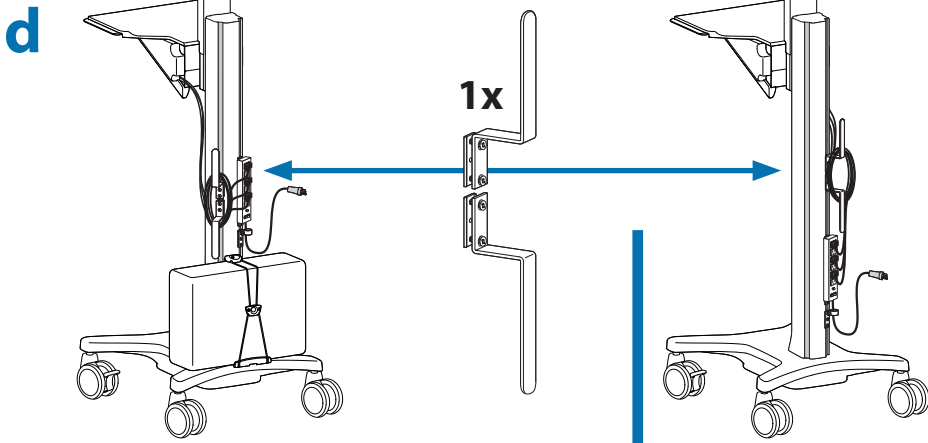


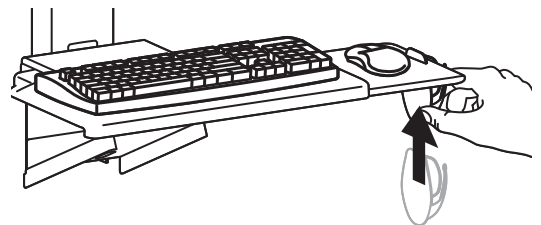
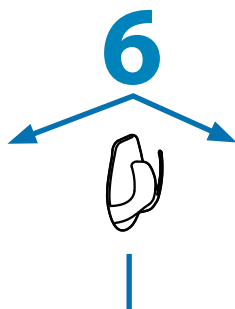
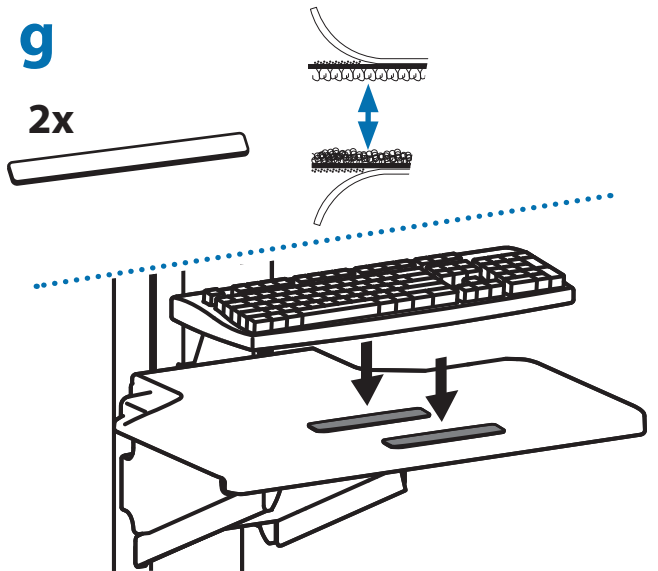
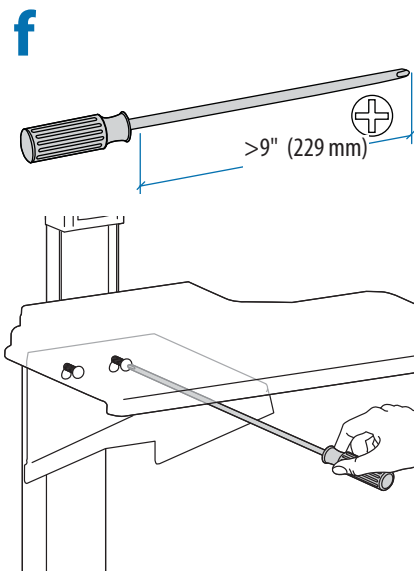
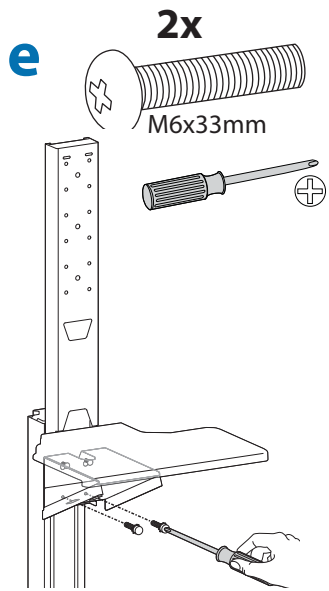
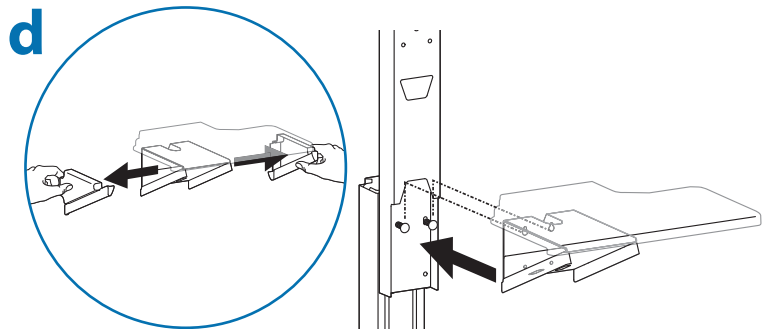
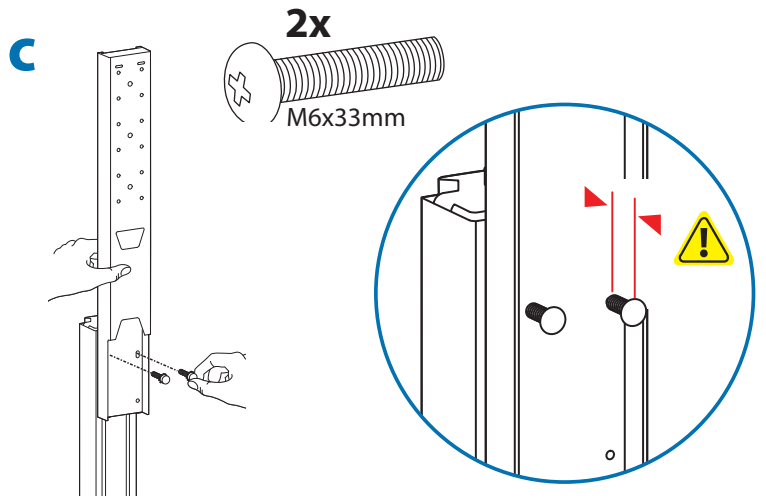
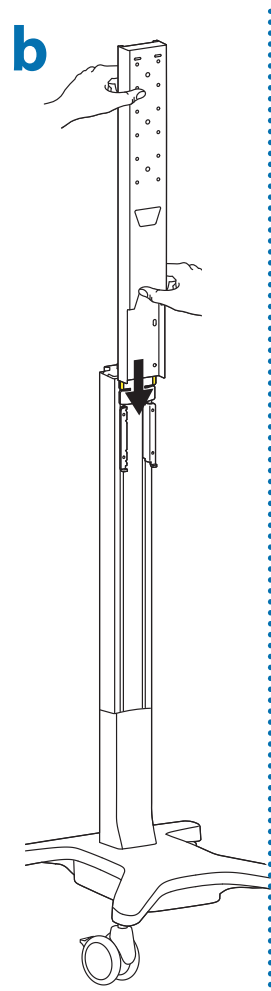
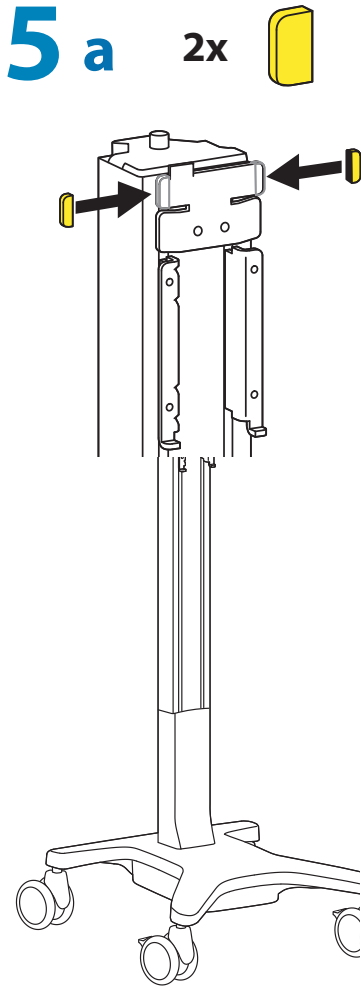
b 2x

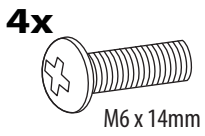


c

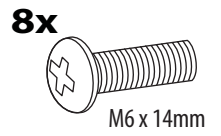






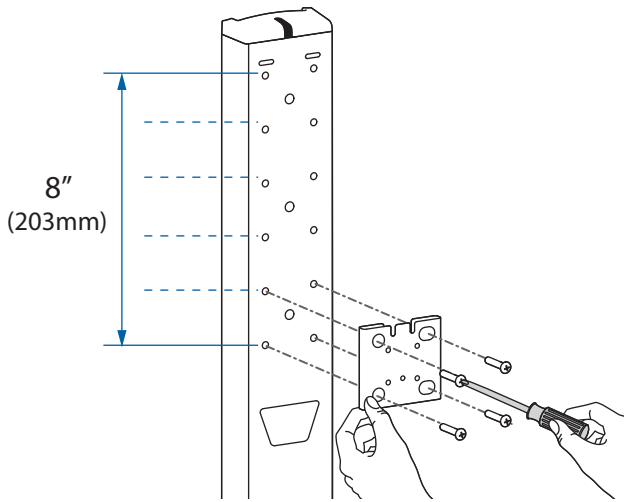


7



无照相机搁板

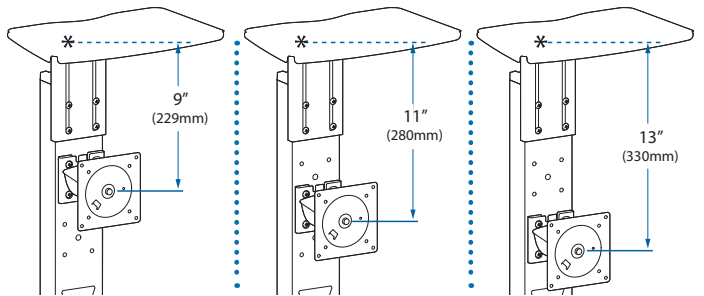
可选配照相机搁板 (单独出售)



a

8"
(203mm)

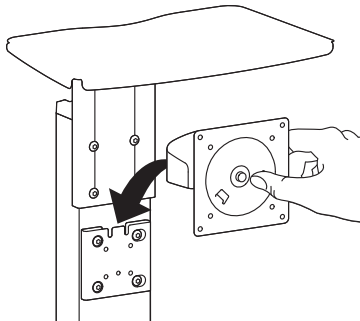
b



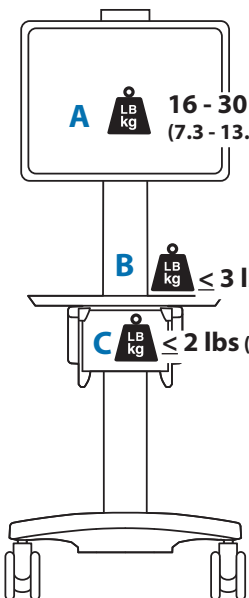
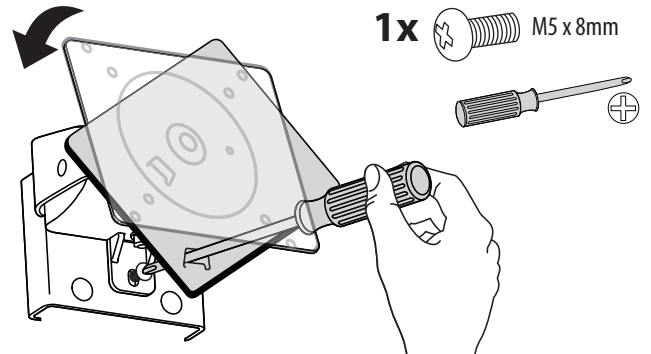
* Shelf Clearance

8

a



b



A+B+C = 14 - 53 lbs (6.35 - 24 kg)

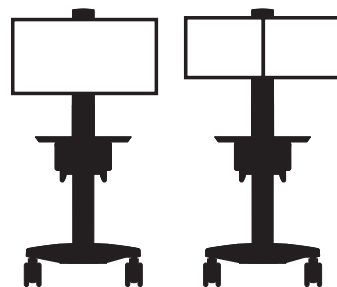
A **16 - 30 lbs**
(7.3 - 13.6 kg)

B **<= 3 lbs** (1.4 kg)

C **<= 2 lbs** (0.9 kg)

! WARNING

DO NOT load Cart below minimum or above maximum weight capacities. DO NOT mount a display larger than the recommended size. Failure to comply with warning may result in Cart instability leading to equipment damage or personal injury.



Min. 14 lbs (6.35 kg)
Max. 49 lbs (22.2 kg)

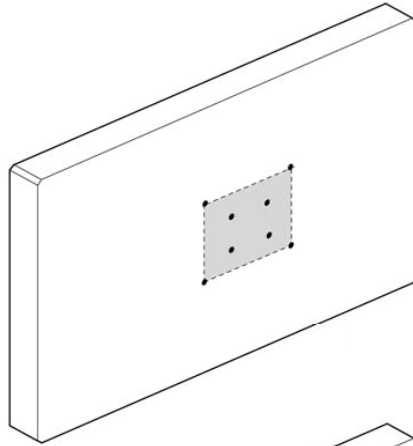
Min. 11 lbs (5 kg)
Max. 46 lbs (20.9 kg)

9 检查电视/显示器 孔眼形状尺寸

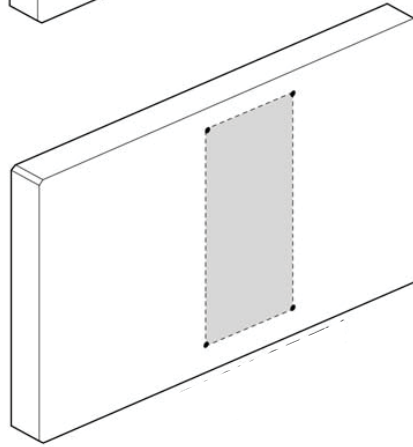
电视/显示器孔眼 形状尺寸

VESA 适配器配置

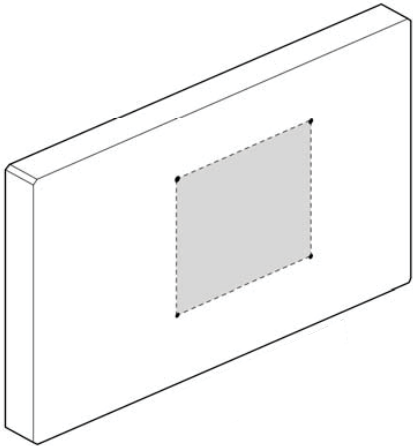
A 75x75mm
100x100mm



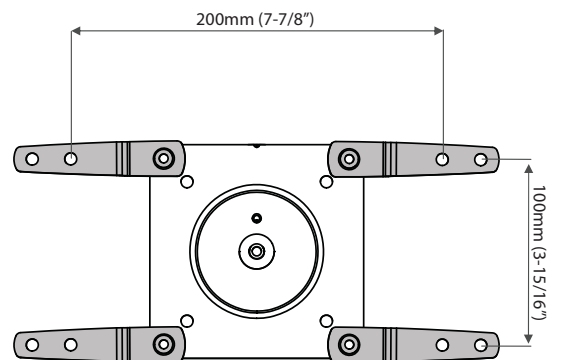
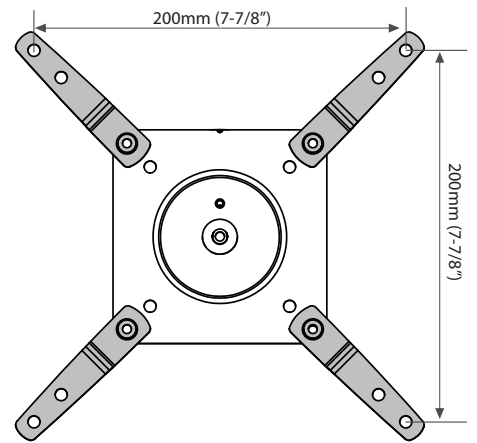
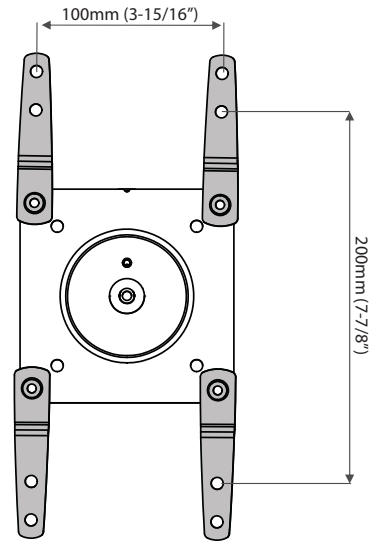
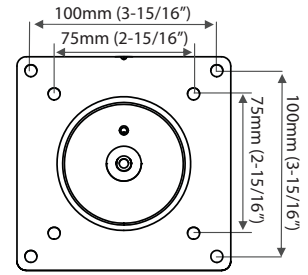
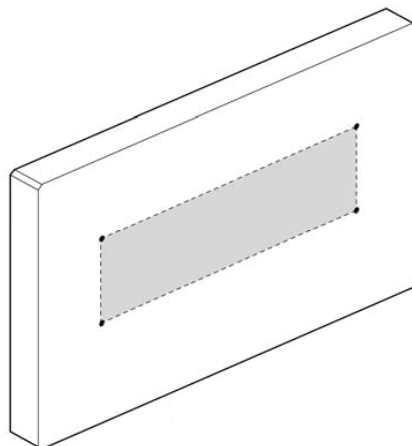
B 100x200mm



C 200x200mm



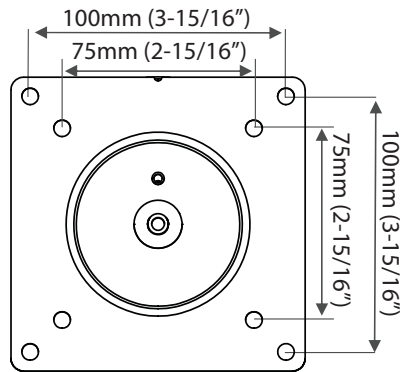
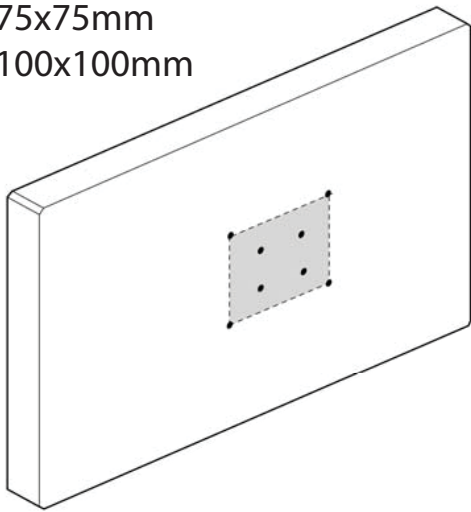
D 200x100mm




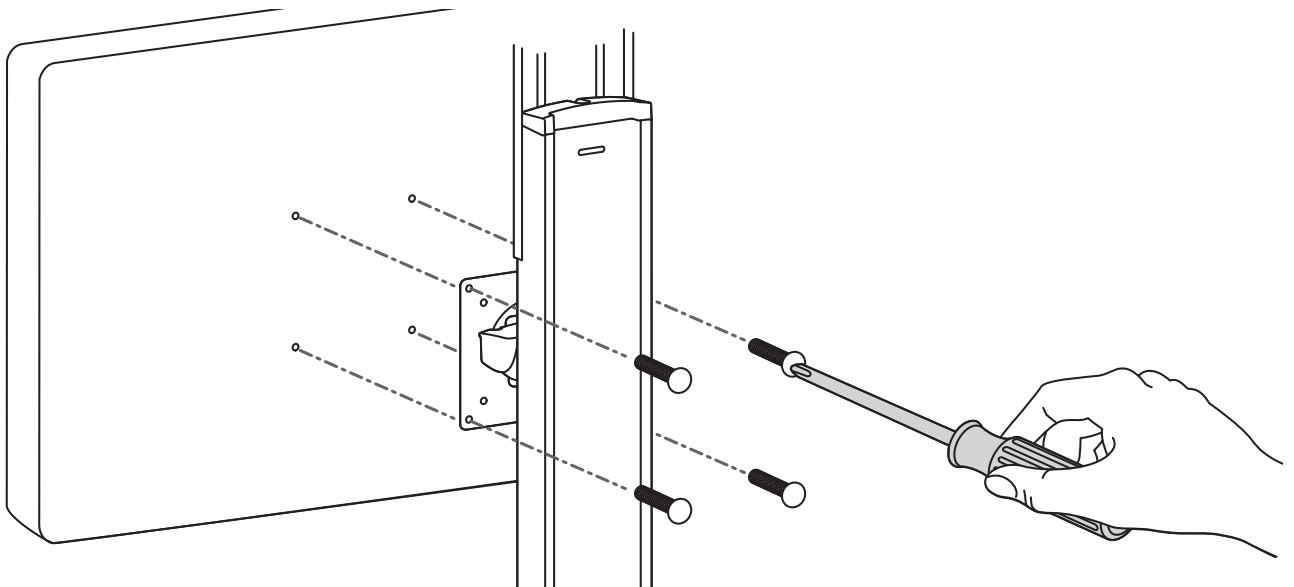
9 将 A 型电视/显示器安装到支臂


A

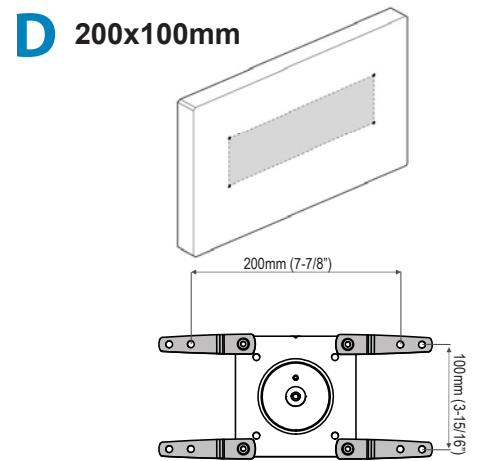
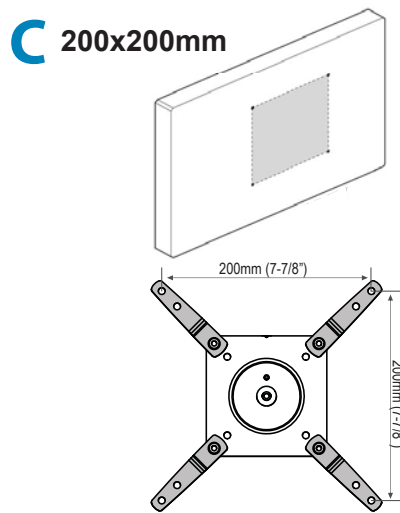
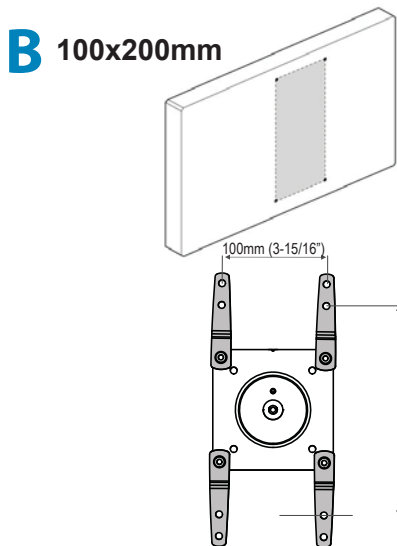
75x75mm
100x100mm



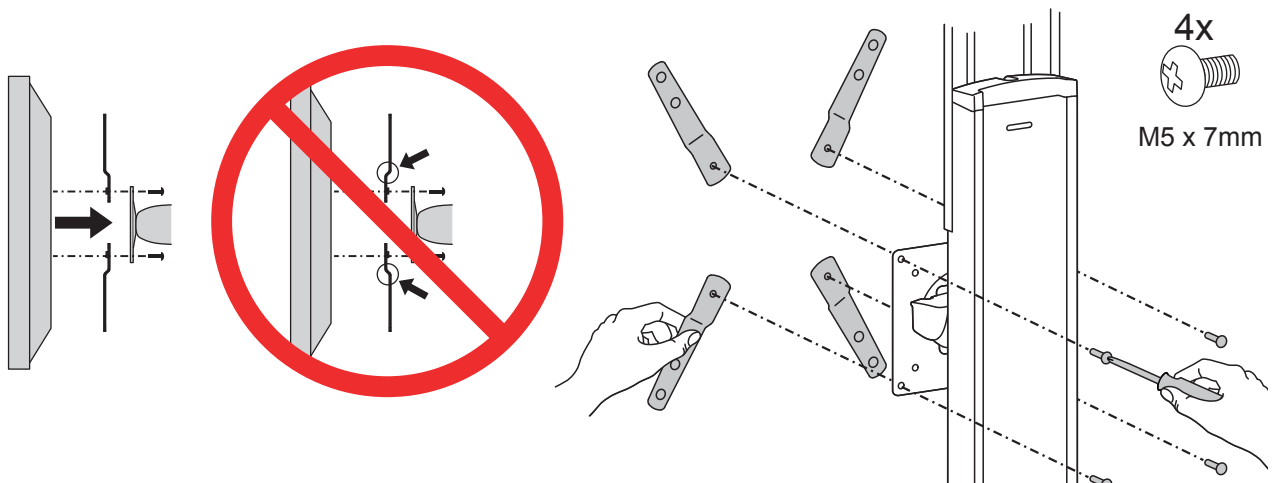
4x 
M4 x 12mm



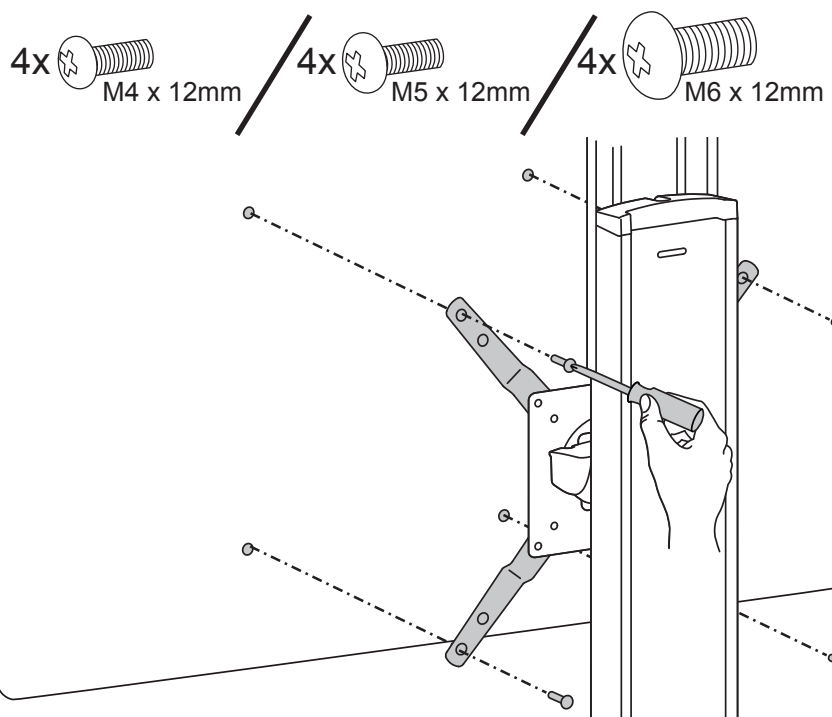
10  16



9a 根据电视/显示器形状尺寸 (B、C 或 D)，将 VESA 适配器安装至支臂。



9b 将 B、C 或 D 型电视/显示器安装至支臂



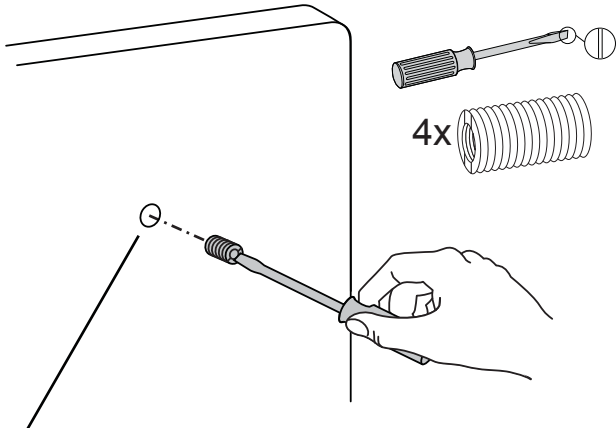
注：为缩小 M8 孔眼以使用 M5 螺丝或如果您的机型带有 Samsung 固定环，请按照下页的 M8M5 套件说明进行操作。



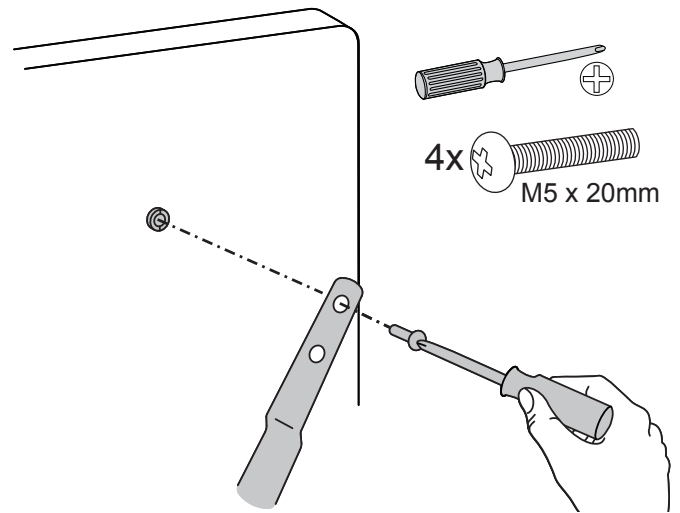
M8M5 套件说明

NOTE: Follow this step only if your TV/monitor has M8 holes which need to be reduced to M5.

Install M8M5 reducer bushing to TV/Monitor and use M5 x 20 mm monitor screws to secure.

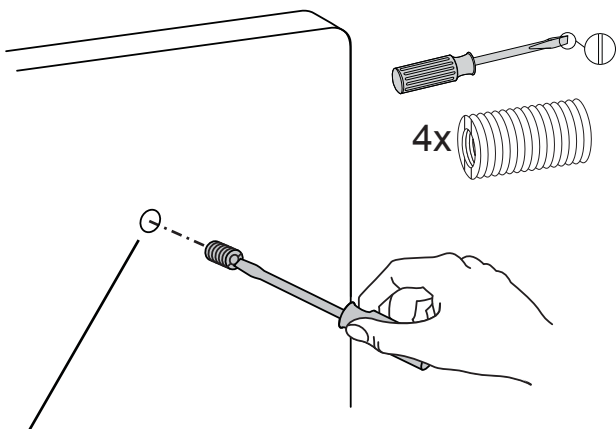


装有 M8 尺寸孔眼的电视/显示器。

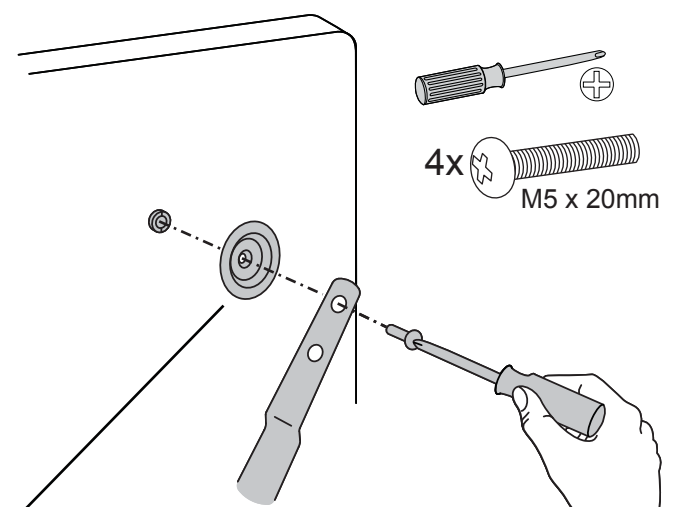


NOTE: Follow this step only for Samsung models using the holder ring.

Install M8M5 reducer bushing to TV/Monitor then use M5 x 20 mm monitor screws and Samsung holder ring to secure.

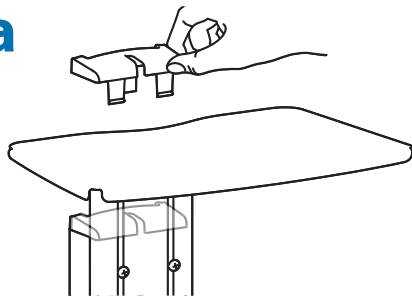


装有 M8 尺寸孔眼的电视/显示器。



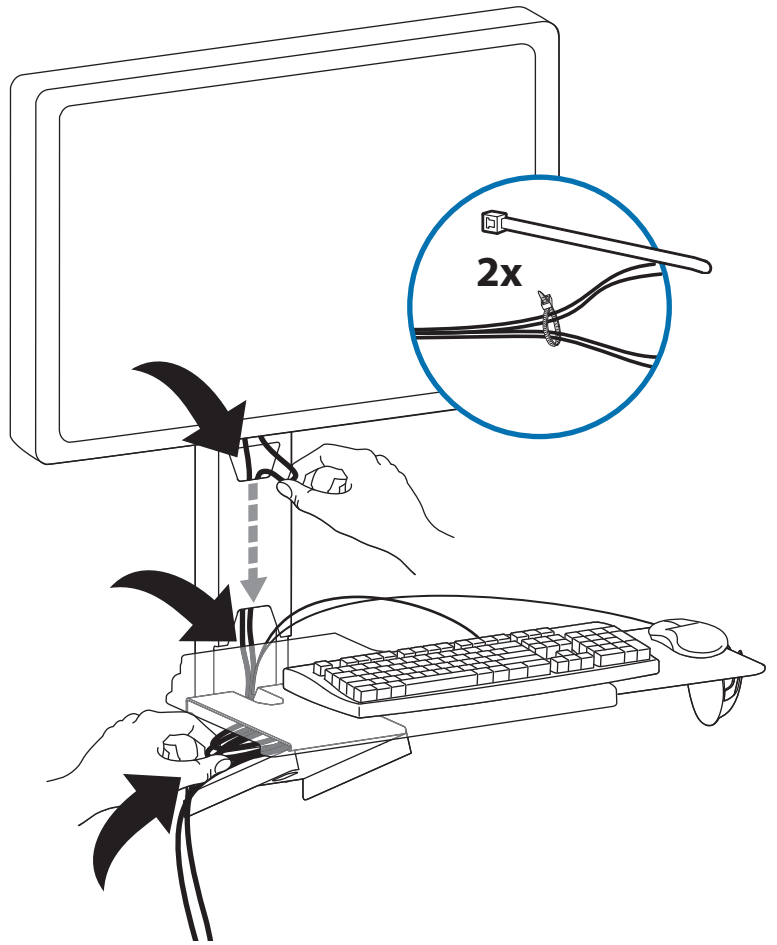
固定环（不包含，仅限 *Samsung）

10 a



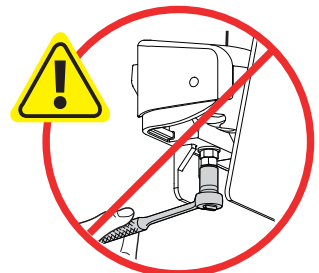
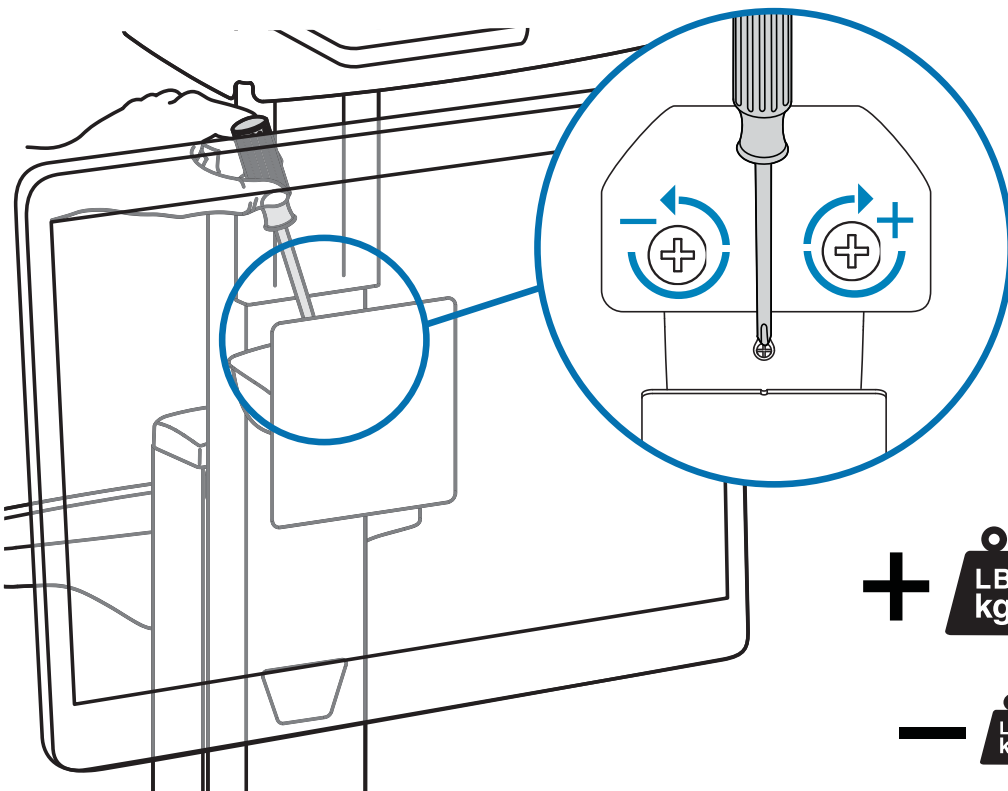
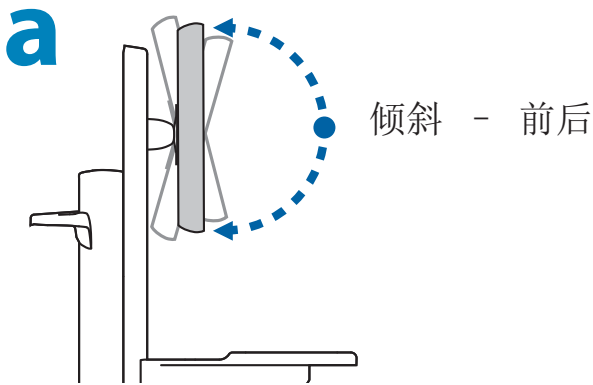
b

电缆敷设
将显示器电缆沿着升降器向下，穿到工作台下面的电缆盒中。使用电缆盒放置过长的电缆。

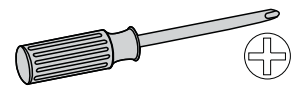


11 调整步骤 Adjustment Step

重要说明！本产品安装完成后需要调节。在尝试进行调节之前，确保所有设备都正确安装在产品上。本产品应能在整个动作范围内灵活自如地移动，并能固定在所设定的位置。如果移动过于容易或过于困难，或者产品不能固定在想要的位置上，请按照调节说明操作，使动作灵活自如。根据您所用产品及调节方式，可能需要旋转几圈后才能注意到差别。每次添加或者从本产品上拆除设备时，都会使安装负荷重量发生变化，您应该重复调节步骤，确保运行状态安全、最佳。



注意！调整上端螺母时底部螺母将会转动；请勿在底部螺母上使用任何工具。不遵守此指示可能导致严重损坏。

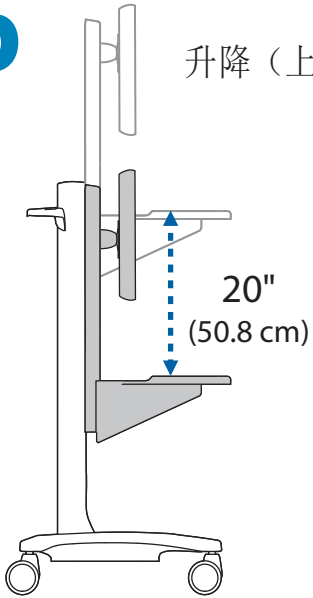


+ **LB kg** 增加摩擦力
如果该产品太易于移动，那么您将需要增加摩擦力：

- **LB kg** 减少摩擦力
如果该产品太难于移动，那么您将需要降低摩擦力：

b

升降（上下）



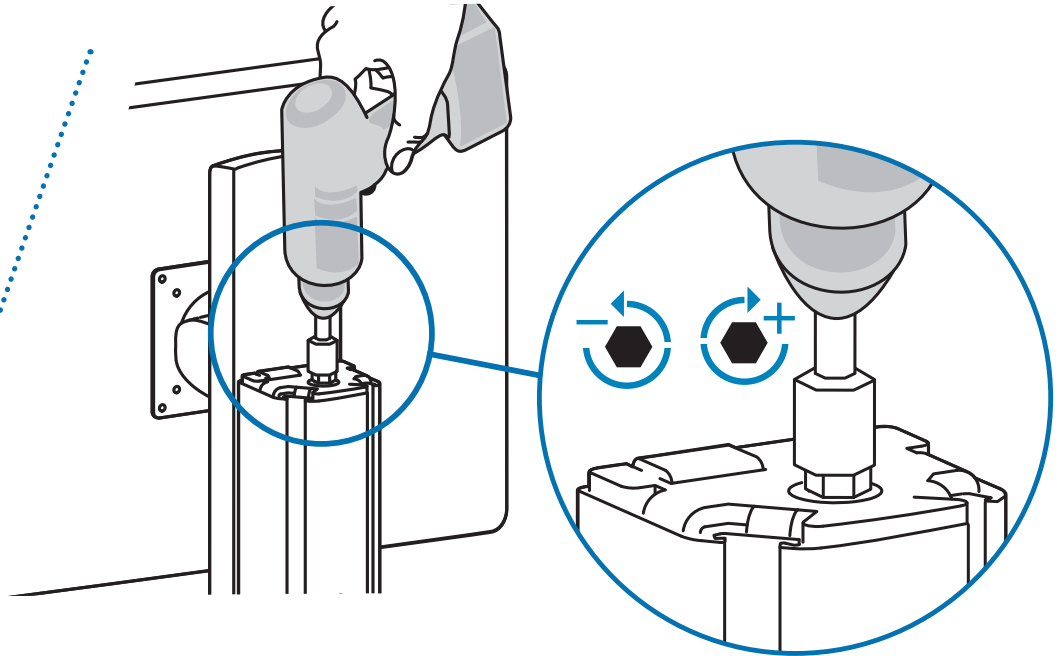
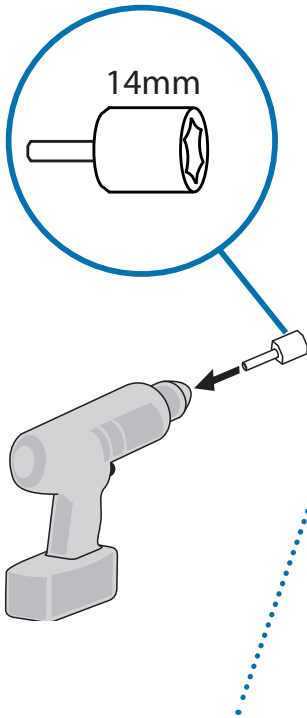
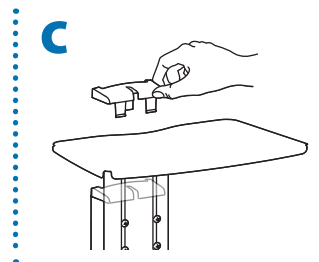
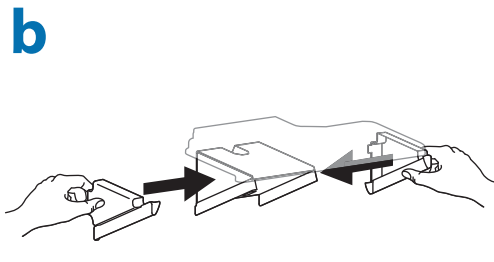
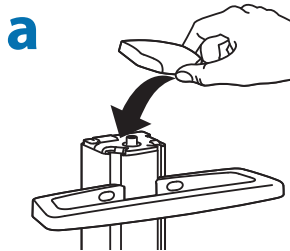
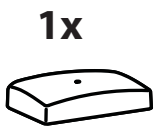
增大升力

如果安装重量过重，或者升起本产品时，产品不停留在升起位置，那么您需要增大升力：

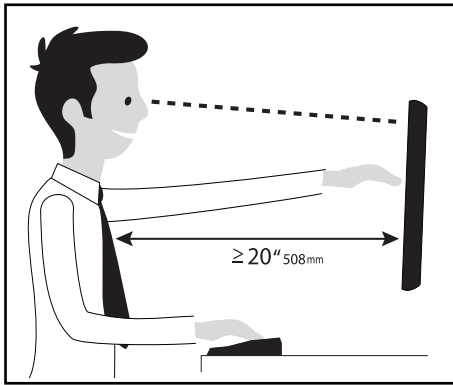


减小升力

如果安装重量过轻，或者降下本产品时，产品不停留在降下位置，那么您需要减小升力：

**12**

按照您自身的需要设置工作站！



想进一步了解以符合人体工程学的方式使用计算机的知识，请访问：
www.computingcomfort.org

- 高度 屏幕顶端的位置要稍低于视线高度。
将键盘放置在大约肘部的高度并且手腕要能放平。
- 距离 将屏幕摆放在距离面部一臂长的位置——至少 508mm (20")。
键盘的位置要够近，以使肘部形成直角。
- 角度 倾斜屏幕以消除眩光。
将键盘向后倾斜 10 度，使手腕能保持放平。

为了减轻疲劳

- 呼吸 - 通过鼻子深呼吸。
- 眨眼 - 经常眨眼可避免眼睛干涩。
- 休息 • 每隔 20 分钟休息 2 至 3 分钟
- 每隔 2 小时休息 15 至 20 分钟。

为保证参观: www.ergotron.com/warranty

对于上门服务: www.ergotron.com

若需当地客户服务电话号码，请访问：<http://contact.ergotron.com>

ergotron®

www.ergotron.com | USA: 1-800-888-8458 | Europe: +31 (0)33-45 45 600 | China: 400-120-3051 | Japan: japansupport@ergotron.com

© 2015 Ergotron, Inc. All rights reserved. NeoFlex™ is a registered trademark of Ergotron, Inc.

Ergotron Inc 尽力提供安装和使用其产品的精确和完整的资料，但是，Ergotron 对任何编辑错误或疏漏（包括在从英文翻译到其它语言过程中发生的错误）不负任何责任，亦不对由于实施该安装指南或者进行与该指南相关的设备操作而引致的任何性质的偶然的、特别的或随之发生的损坏负有任何责任。Ergotron, Inc. 保留对产品设计和/或产品文件进行修改的权利，而无需向用户发出通知。要获得最新的产品资料，或了解本文件是否可提供其它语言版本，请联络 Ergotron。未经 Ergotron, Inc.（地址：1181 Trapp Road, Eagan, Minnesota, 55121, USA）预先书面同意，不得以任何形式或者通过任何方式（电子、机械、影印、记录或其它方式）对本文件的任何部分进行复制、储存在可索取系统中，或进行传播。在美国和外国正在申请的和已登记专利。Ergotron 是 Ergotron, Inc. 的注册商标。