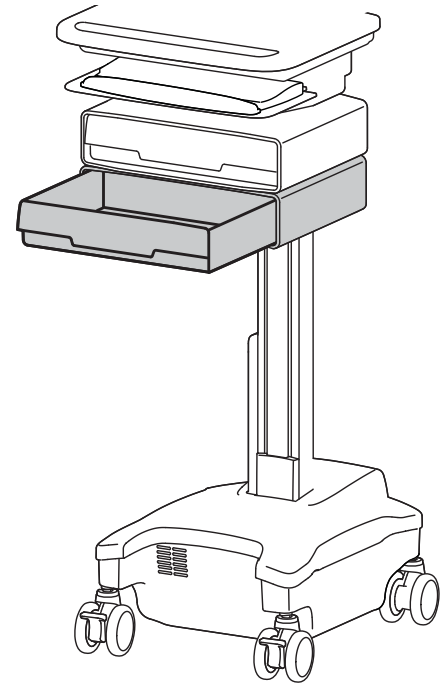


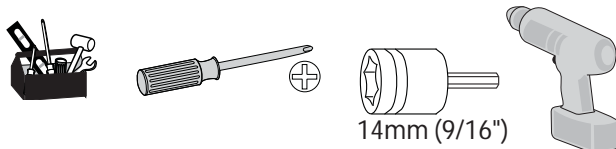
www.ergotron.com
 USA 1-800-888-8458
 Europe +31 (0)33-45 45 600
 China 86-769-86018920

www.ergotron.com

User's Guide - English
 Guía del usuario - Español
 Manuel de l'utilisateur - Français
 Gebruikersgids - Nederlands
 Benutzerhandbuch - Deutsch
 Guida per l'utente - Italiano
 ユーザーガイド: 日本語
 用户指南: 汉语



1	A 1x	B 1x	C 4x ST4.2 x 8mm
---	--------------------	--------------------	-----------------------------------



11.8" (300 mm) x 14.6" (370 mm)
 3.4" (86 mm)
 14.4" (367 mm) x 11.6" (295 mm)
 2.3" (58 mm) x 3" (76 mm)

Drawer Insert Weight = 2 lbs (.8 kg)
 <4 lbs (1.8 kg) (without insert)
 <2 lbs (.8 kg) (with insert)

! WARNING

IMPACT HAZARD!
 MOVING PARTS CAN CRUSH AND CUT.
Minimize Lift Tension BEFORE:

- Removing Mounted Equipment.
- Shipping Cart
- Storing Cart

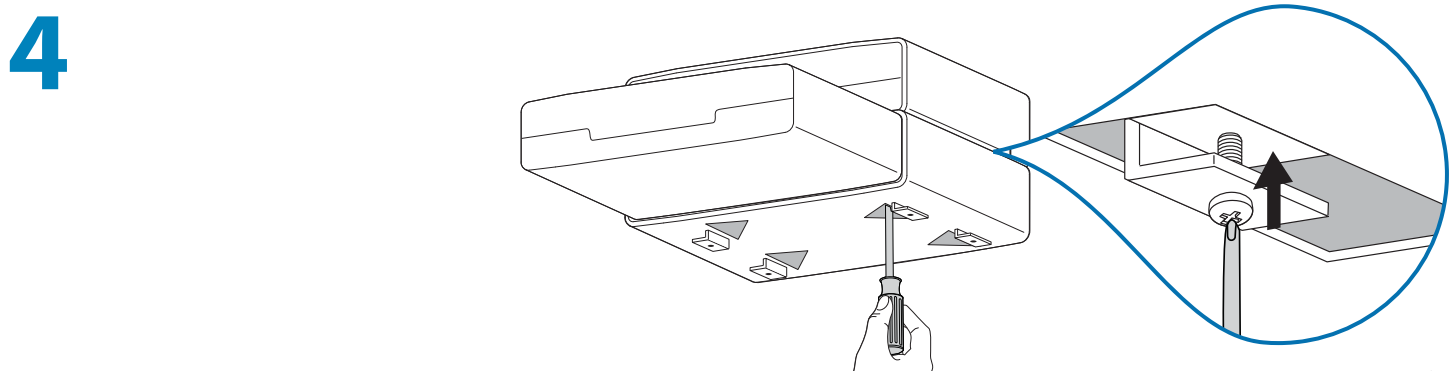
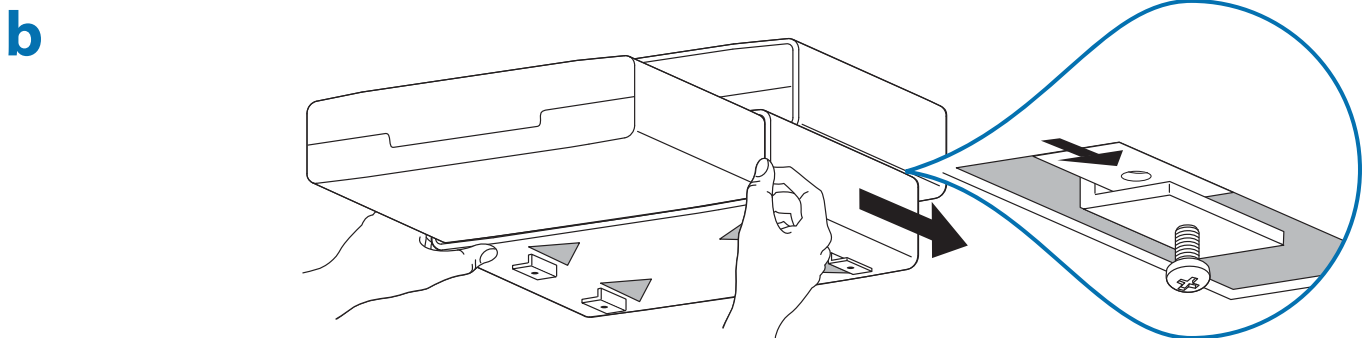
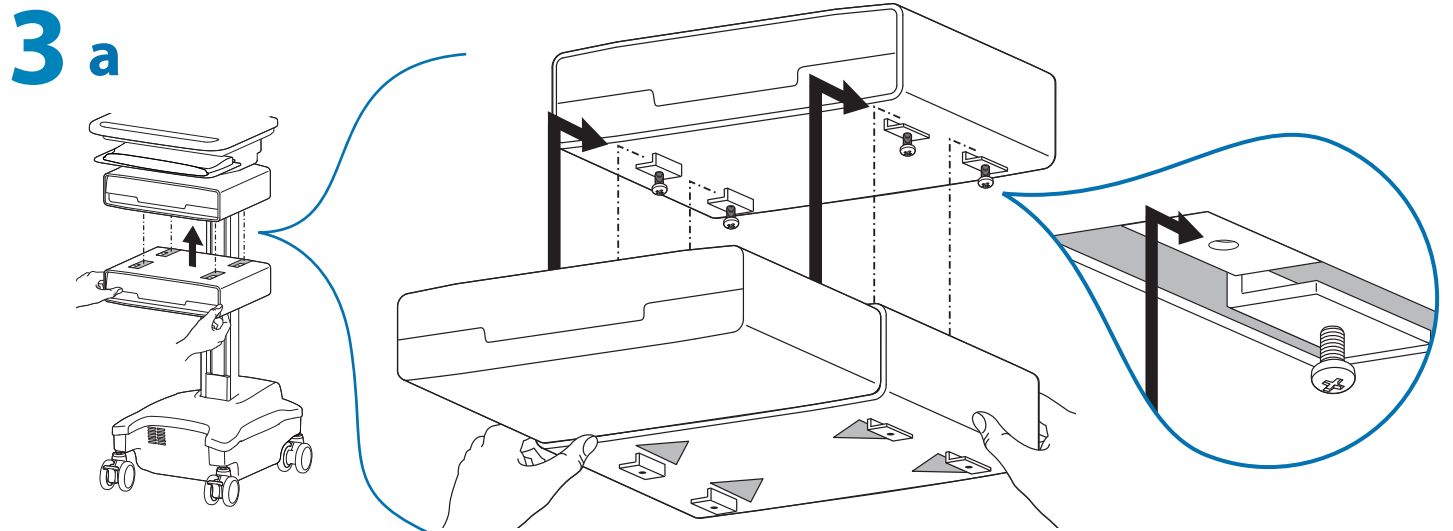
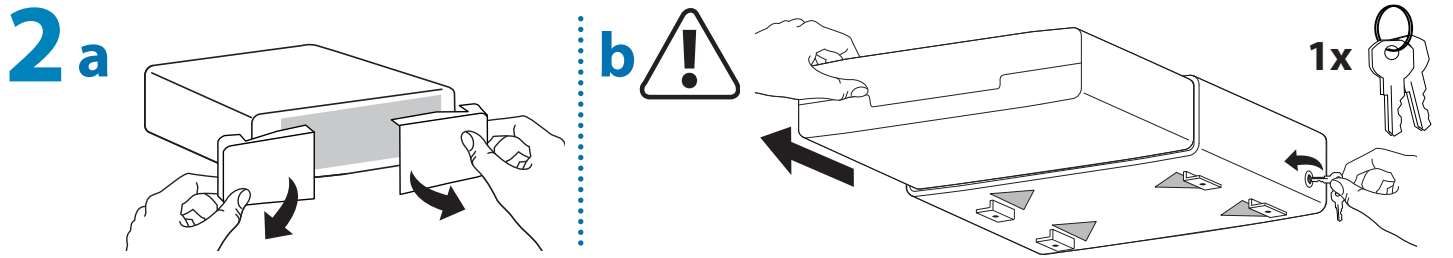
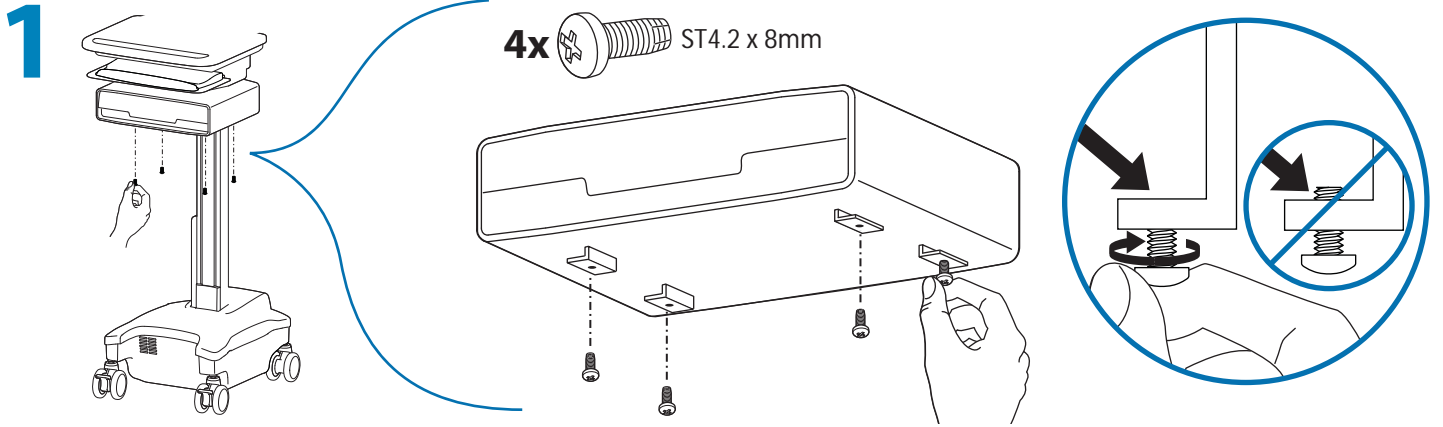
To Minimize Lift Tension

1. Lower worksurface to lowest position.
2. Turn adjustment nut at top of riser counterclockwise until it stops (Adjustment may require 40-60 revolutions).

Failure to heed this warning may result in serious personal injury or property damage!

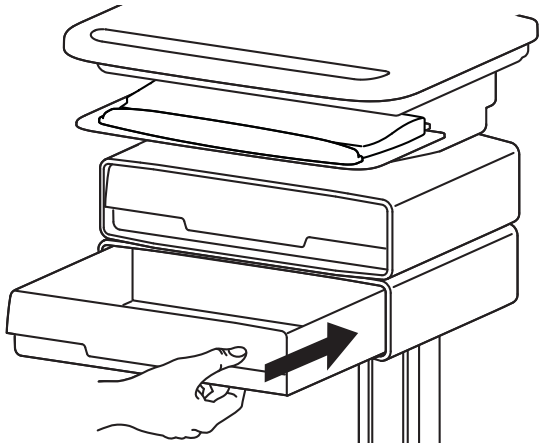
For More information and instructions refer to product guide at <http://4support.ergotron.com> or contact Ergotron Customer Care at 1-800-888-8458.

822-052

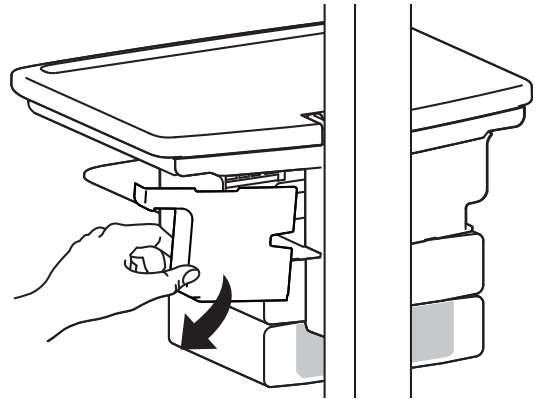


5

a

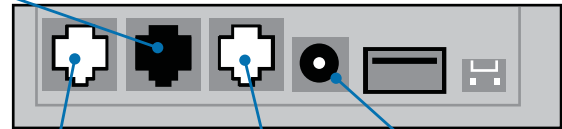
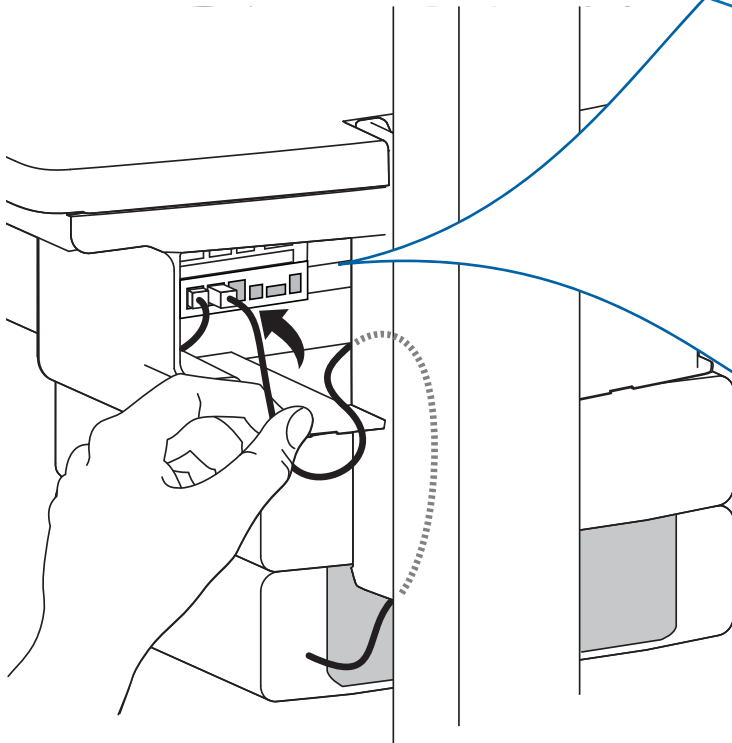


b



c

Connect the cable from the newly attached AutoLock Drawer here.

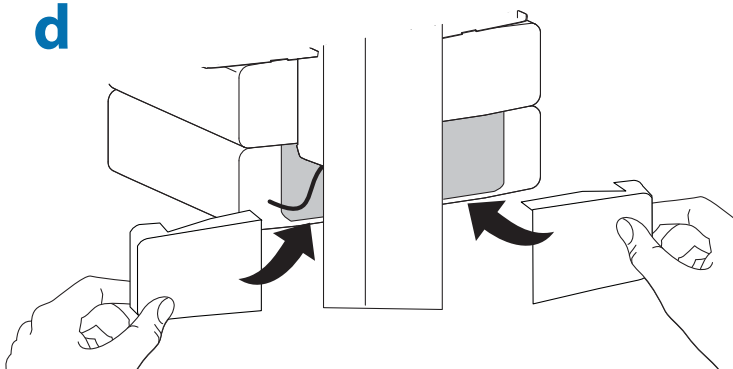


Drawer 1
(factory connected)

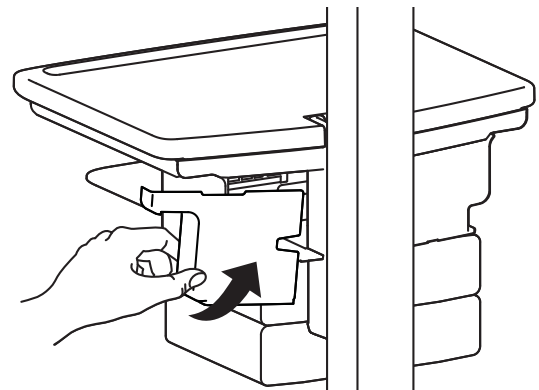
Auto Lock Drawer Keypad
(factory connected)

Power to AutoLock Drawer to be
connected by User

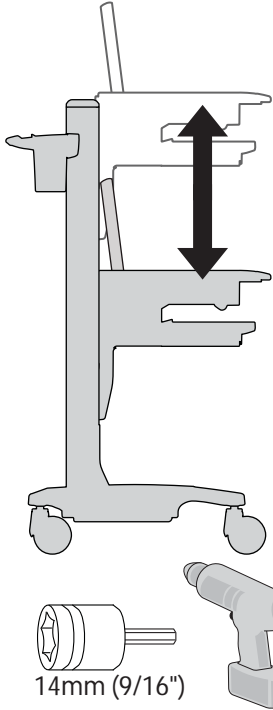
d



e



6

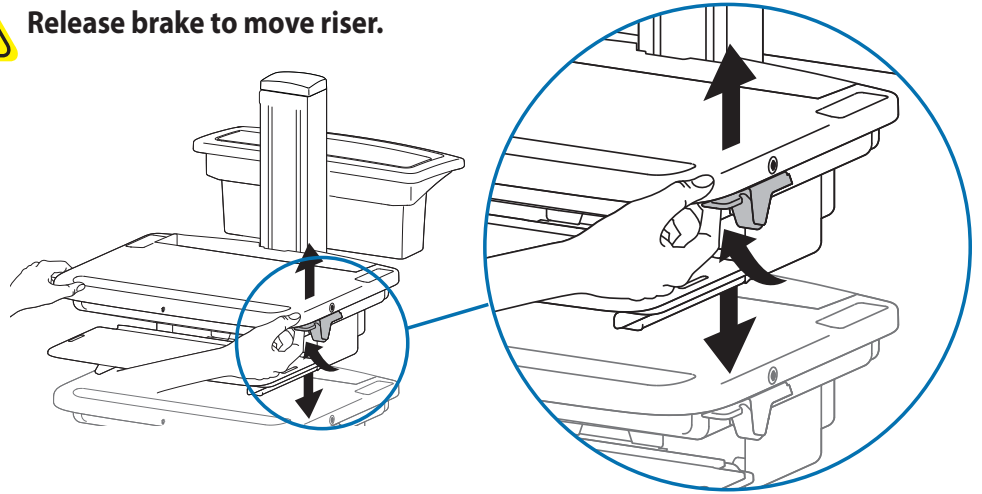


It is important that you adjust this product according to the weight of the mounted equipment as described in the following steps. Any time equipment is added or removed from this product, resulting in a change in the weight of the mounted load, you should repeat these adjustment steps to ensure safe and optimum operation.

Adjustments should move smoothly and easily through the full range of motion and stay where you set it. If adjustments are difficult and do not stay in the desired position, follow the instructions to loosen or tighten the tension to create a smooth, easy adjustment motion. Depending on your product and the adjustment, it may take several turns to notice a difference.



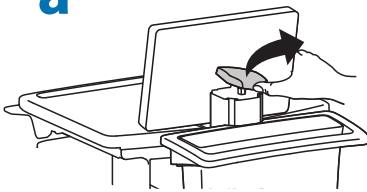
Release brake to move riser.



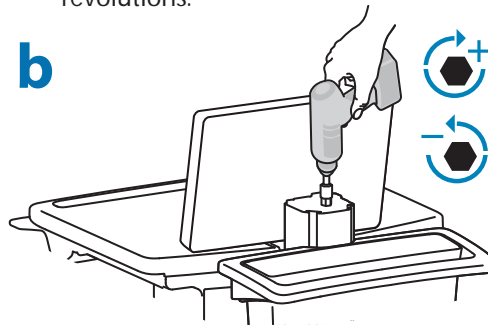
Follow these instructions to tighten or loosen tension.

NOTE: Adjustment may require 40 - 60 revolutions.

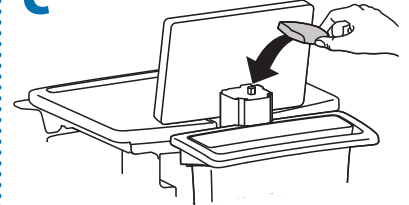
a



b



c

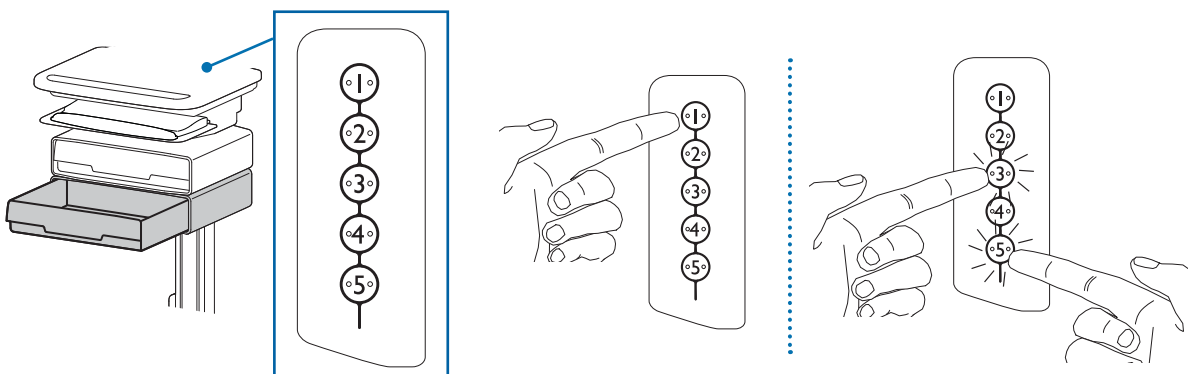


7

a Ensure that the main power system batteries are installed and functioning. The power does not need to be turned on at the power system user interface.

b **Programming New Codes** (Default Master Code: 12345)

- 1 Enter Master Code on Keypad.
- 2 Numbers 3 and 5 on the Keypad will start flashing, indicating the Master Code has been accepted.
- 3 Simultaneously press 3 and 5 while they are flashing.
- 4 All the numbers will light (you have 3 seconds to enter a code).
- 5 Enter a new code—any sequence of 5 numbers. (The first code programmed is the new Master Code.)
- 6 When the code is accepted, all of the LEDs will flash once in acknowledgement (you have 3 seconds to enter the next code).
- 7 You can then proceed to program up to 10 personal codes by repeating steps 5 and 6.
- 8 When finished entering new codes, system will exit program mode after 3 seconds with a series of LED flashes.

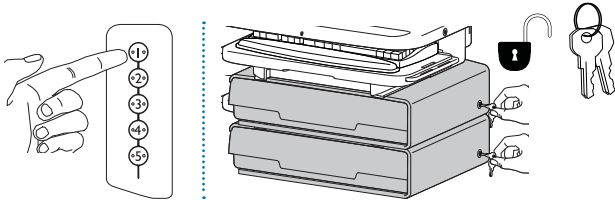


8 Test key pad function: Ensure that the main power system batteries are installed and functioning. The power does not need to be turned on at the power system interface.

The procedure to open the drawers is the same as for the single drawer version, with the exception that once the Master or Personal code is entered, 1 and 2 will illuminate, allowing the user to select which drawer to open (1 is the top drawer, 2 is the bottom).

Unlock Drawer* (3 methods):

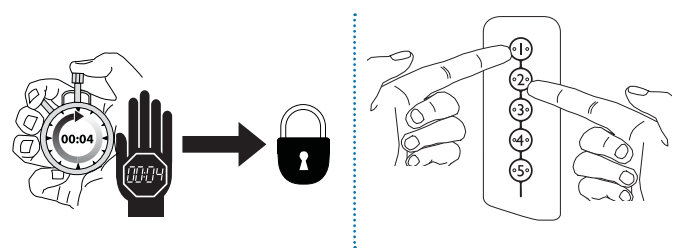
- Enter Master Code, then press 1 to open drawer 1, **or 2 to open drawer 2.**
- Enter Personal Code, then press 1 to open drawer 1, **or 2 to open drawer 2.**
- Key - turn counter clockwise 1/8 turn



*The system is set up to allow only one drawer to be open at a time.

Lock Drawer (2 methods):

- Wait 4 seconds for drawer to lock automatically
- Press 1 and 2 on number pad simultaneously

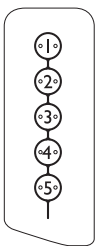


Lost Master Code

Contact Ergotron Customer Care for instructions.

Drawer Troubleshooting

- Key pad numbers are dark
 - Touch anywhere on number pad to activate back-light, (drawer remains locked until you enter valid code)
 - Check to make sure DC cable is connected
- Code is accepted but drawer does not open
 - For dual drawer systems, make sure other drawer is fully closed and lock engaged**
 - For single drawer systems, make sure drawer is fully closed before entering code
- Drawer won't open when Personal Code is entered
 - Test system by entering Master Code. If drawer doesn't unlock, follow "Lost Master Code" instructions.



Flashing LED Meaning

1	Drawer is open
1 & 2	Waiting for drawer selection (see Unlock Drawer)
3 & 5	Unit is ready to program master or user codes (see Programming New Codes)
5	Drawer is unlocked
All	New code accepted

Ergotron Limited Warranty

Ergotron warrants that its products will remain free of defects in material and workmanship for five (5) years. All subject to the exceptions, exclusions and limitations as set forth below.

Exceptions to this warranty include:

- Three (3)-year warranty on all Neo-Flex™ by Ergotron products
- StyleView Carts:
 - Two (2)-year warranty on all power supply components by Ergotron
 - Battery carries an up to a one (1)-year performance warranty (see Limitations below) and six (6)-month warranty against manufacturer's defects. Note: In EU, the warranty against manufacturer's defects is two (2)-years.
 - One (1)-year warranty on all electronic non-power supply components (excludes AA batteries)
- OEM products resold by Ergotron are warranted by the respective manufacturer
- Product that is refurbished by Ergotron and sold by Ergotron carries a 90-day warranty
- Thirty (30)-day warranty on all service programs
- Ergotron warranties are nontransferable

Exclusive Remedy: If any Ergotron equipment is or becomes defective in material or workmanship during the warranty period, Ergotron will determine with the customer if the product defect is covered under warranty. Ergotron, at its sole discretion, may replace or repair the unit determined to be under warranty at a designated Ergotron location or at the customer location. The purchaser must get pre-approved authorization to return product to Ergotron. The Purchaser must contact Ergotron to obtain an RMA (Return Material Authorization) number. Ergotron will promptly repair or replace the item and ship it to Purchaser at no charge to the Purchaser. Performance of repair or replacement does not renew or extend the warranty period.

THIS REMEDY IS THE EXCLUSIVE REMEDY FOR BREACH OF WARRANTY AS TO THE EQUIPMENT, except in respect to personal injury. Purchaser shall give Ergotron immediate written notice of any personal injury resulting from use of Ergotron equipment.

Exclusions and Limitations: Ergotron disclaims liability for injuries or losses caused by or associated with installation or use of its equipment in any manner other than in strict conformance with the instructions set forth in its installation manuals, supplemental assembly and installation instruction sheets, technical bulletins or product literature, or by equipment that has been altered, damaged or misused.

Warranty on fully charged batteries left in an unused state for more than three (3) consecutive months is automatically void. Warranty on fully discharged batteries left in an unused state for more than three (3) consecutive days is automatically void.

Two (2)-year warranty on all power supply components by Ergotron; battery carries a 90 day performance warranty and six (6) month warranty against manufacturer's defects. Performance warranty is extended to 1 year on the battery providing:

- StyleLink software is installed and it shows compliance with exclusions and limitations
- Battery is not discharged below 25% capacity more than 25 times
- Battery is fully recharged at least once every 36 hours

Purchaser has not relied upon and Ergotron disclaims any and all warranties other than the expressed warranty stated above, subject to the exclusions and limitations provided herein. Ergotron disclaims all other warranties, expressed or implied, including but not limited to the warranties of merchantability and fitness for a particular purpose. Ergotron further disclaims liability to purchaser and all others for all consequential, incidental and special damages caused by or in connection with the products, their use or misuse, and their performance or nonperformance.



© 2009 Ergotron, Inc.
All rights reserved.

While Ergotron, Inc. makes every effort to provide accurate and complete information on the installation and use of its products, it will not be held liable for any editorial errors or omissions (including those made in the process of translation from English to another language), or for incidental, special or consequential damages of any nature resulting from furnishing this instruction and performance of equipment in connection with this instruction. Ergotron, Inc. reserves the right to make changes in the product design and/or product documentation without notification to its users. For the most current product information, or to know if this document is available in languages other than those herein, please contact Ergotron. No part of this publication may be reproduced, stored in a retrieval system, or transmitted in any form or by any means, electronic, mechanical, photocopying, recording or otherwise without the prior written consent of Ergotron, Inc., 1181 Trapp Road, Eagan, Minnesota, 55121, USA Patents Pending and Patented U.S. & Foreign. Ergotron is a registered trademark of Ergotron, Inc.

Americas Sales and Corporate Headquarters

St. Paul, MN USA
(800) 888-8458
+1-651-681-7600
www.ergotron.com
sales@ergotron.com

EMEA Sales

Amersfoort, The Netherlands
+31 33 45 45 600
www.ergotron.com
info.eu@ergotron.com

APAC Sales

Tokyo, Japan
www.ergotron.com
apacustomerservice@ergotron.com

Worldwide OEM Sales

www.ergotron.com
info.oem@ergotron.com