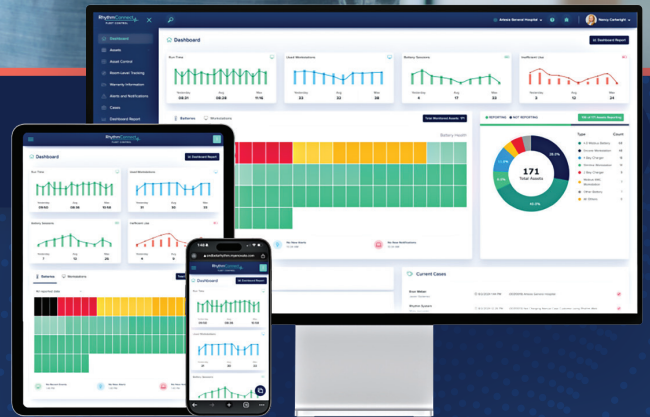


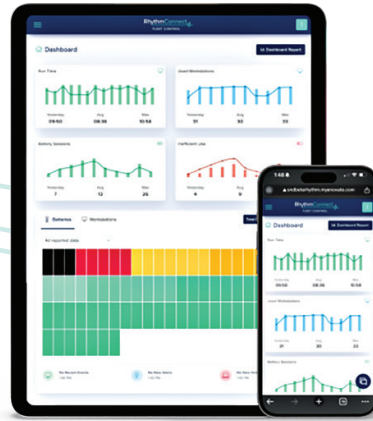


RhythmConnect™ 



**Fleet management  
software & services**

ergotron



**Ergotron's RhythmConnect cloud-based software** enables monitoring and management of mobile EHR workstations in one dashboard with real-time fleet visibility – even across multiple hospitals and provider locations.

### Master fleet management with RhythmConnect

- RHYTHMCONNECT CREATES VISIBILITY**  
by putting the power to manage virtually in your hands.
- RHYTHMCONNECT CREATES EFFICIENCY**  
by evolving work from spreadsheets to a hands-off team member that always performs.
- RHYTHMCONNECT CREATES TRANSPARENCY**  
by removing assumptions and unknowns, teams pivot from reactionary problem-solving to data-informed decision making.
- RHYTHMCONNECT ENSURES SECURITY**  
with strong security features. FIPS 140-3 validated.

### RhythmConnect helps IT teams and user communities succeed

-   
**Enhances Patient Care**  
With less downtime and more efficient workstations, clinicians can spend more time on patient care and less on technical issues.
-   
**Lowers Cost of Ownership**  
Reduce costs through increased IT productivity, remote diagnostics and predictive analytics, better planning and procurement.
-   
**Streamlines Operations**  
ServiceNow and Imprivata-ready integration options allow your platforms and teams to work more efficiently.

# Available options

	Included FREE	MOST POPULAR	Hands-off Service & Support
	Asset Control	Fleet Control	Command Center
	Desktop and mobile applications for reconfiguring, controlling and locating individual assets. Perfect in single locations.	Secure web platform built for the challenges of IT teams with large fleets and multiple locations.	Designed to meet the demands of large-scale health systems with minimal internal support required.
INVESTMENT DETAILS	Included with RhythmConnect-ready assets	Upgrade with annual subscription. Requires onsite implementation.	Upgrade with annual subscription. Requires onsite implementation.
SERVICE LEVEL	Self service	Self service	Managed service
CONTROL RANGE	WiFi & Bluetooth (local)	WiFi, WAN, Bluetooth & BLE	WiFi, WAN, Bluetooth & BLE
REAL-TIME MONITORING	—	✓	✓
BATTERY HEALTH TRACKING	—	✓	✓
FLEET DATA DASHBOARD	—	✓	✓
AI ASSISTANT	—	✓	✓
AUTOMATIC ISSUE DETECTION	—	✓	✓
CASE & WORK ORDER TRACKING	—	✓	✓
INSIGHT REPORTS	—	✓	✓
CUSTOM REPORTS	—	—	✓
PROACTIVE IN-WARRANTY REPAIR	—	—	✓

### API Integrations: ServiceNow and Imprivata-Ready

Integrate RhythmConnect with hospital IT systems to streamline operations while maintaining robust security and compliance.

Active Directory • IT Service Management  
Secure Drawer Management • Single Sign-on • Additional Integrations

### Licensing Options

Fleet Control and Command Center are available with scalable block licensing.

**SMALL** Size – up to 20 assets  
**BLOCK** Ideal for – Small clinics, pilots, entry-stage buyers

**LARGE** Size – up to 100 assets  
**BLOCK** Ideal for – Standard hospitals, centralized IT, multi-site deployments

# Fleet Control

Monitor and manage your mobile EHR workstations in one dashboard with real-time fleet visibility – even across multiple hospitals and provider locations.



## Fleet Control Dashboard

Fleet Control is your view into actionable real-time data so you can make decisions quickly and easily about your battery-powered mobile EHR workstations.

### Real-Time Status

Real-time workstation usage and battery performance are key decision support metrics that ensure workstations are optimized for your staff.

### Actionable Insight Reports

Remove the guesswork with intuitive reports that deliver actionable insights for managing your fleet and assets.

### Battery Health

At a glance, you can view an entire battery fleet to identify trouble areas. Within seconds, you will know which batteries need to be refreshed now and for the future.

### Asset Snapshot

Keep a clear view of your total asset inventory with one concise report.

### Superior Support

Your dedicated account manager is one click away to offer you superior service and support you can rely on.

### Case Detail

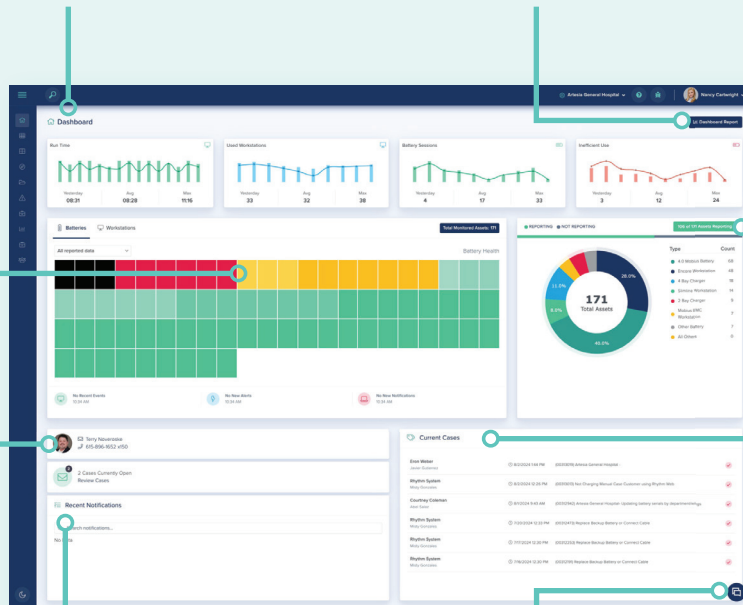
Get customer-related information about your cases on the fly. With each work order, details are displayed with mapping and shipment status information.

### Notifications

Device notification history is key in understanding recurring issues. The list is searchable so you can identify issues and trends quickly and respond accordingly.

### AI Assistant

The AI Assistant leverages system data, as well as software and product manuals, to provide both insight and contextual support.



# Command Center

As an upgrade from Fleet Control, RhythmConnect Command Center offers an enhanced level of service with Ergotron's subject-matter experts managing your fleet with minimal internal support.



## Real-Time Fleet Monitoring

Ergotron manages the day-to-day operations of your fleet, freeing up time for your in-house team to focus on other priorities. You also retain 24/7 access to Fleet Control to gain valuable insights and take control whenever needed.



## Proactive Repair & Replacement

Any asset issues covered under warranty are proactively addressed by Ergotron's team, ensuring swift resolution while eliminating the need for in-house teams to initiate a request.



## Analytics & Insights

Our experts analyze your fleet data, identifying opportunities for optimization and providing valuable insights on asset utilization, case management and ROI – all packaged into a professional presentation with a 30-minute live session to assist in resource and budget planning.



## Custom Reporting

In addition to a robust offering of built-in reports, customers have access to 1 custom report-building service per quarter to assist in packaging fleet data, and surfacing insights to help with organizational planning/budgeting. Fast-tracking some of the work for you to supercharge your productivity.



## Dedicated Support

Command Center customers have direct communication paths via email, phone and chat to access Ergotron's Software Success Team for support needs.

## Strong Security Features

- ✓ Encryption of data at rest and in transit
- ✓ Regular and quick-to-release security updates
- ✓ Industry-standard secure authentication methods
- ✓ No software is installed on PCs or on-prem of RhythmConnect-ready workstations
- ✓ Ergotron's proprietary BLE mesh technology reduces the need for wireless network connectivity on Ergotron devices
- ✓ RhythmConnect does not collect, store or process your protected information



FIPS 140-3 Inside  
Certificate 5026

### RhythmConnect Protects Your Data

Ergotron's RhythmConnect software and RhythmConnect-compatible products include a FIPS-validated cryptographic module providing cryptographic services needed to securely support the industry standard FIPS (Federal Information Processing Standard). FIPS 140-3 is a security benchmark certification mandated by the U.S. federal government for products which protect sensitive but unclassified information using of cryptography.



Scan code or click here for more  
information about FIPS certification.



## RhythmConnect Compatible Workstations

RhythmConnect is a holistic fleet solution, pairing with the highest quality products on the market. RhythmConnect-ready products include Mosaic, Envoy, and Encore mobile workstations.



Scan code or click here for more information about compatible products.



**Experience the power of RhythmConnect.**  
Schedule a demo at [www.ergotron.com/rhythmconnect](http://www.ergotron.com/rhythmconnect)

**USA & Canada:** 800.888.8458 | +1.651.681.7600 | [customerservice@ergotron.com](mailto:customerservice@ergotron.com)  
**EMEA:** +31.33.45.45.600 | [info.eu@ergotron.com](mailto:info.eu@ergotron.com)  
**APAC:** [apaccustomerservice@ergotron.com](mailto:apaccustomerservice@ergotron.com)  
**Custom:** [oemsales@ergotron.com](mailto:oemsales@ergotron.com)

© Ergotron, Inc. 12.18.2025 All Ergotron trademarks are the property of Ergotron, Inc. All rights reserved.  
All other trademarks are the property of their respective owners.

Content subject to change. Ergotron devices are not intended to cure, treat, mitigate or prevent any disease.  
Patent information available at [www.ergotron.com/patents](http://www.ergotron.com/patents).

250017

